

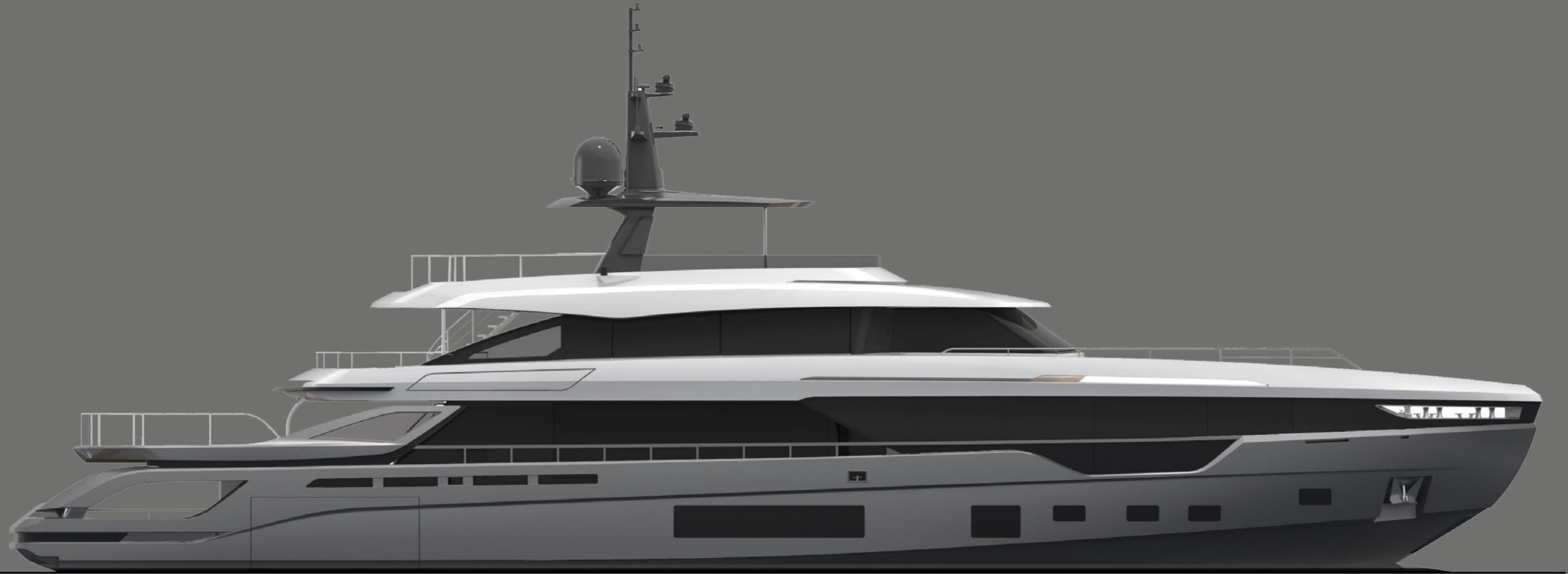
AZIMUT  
*Grande*

TRIDECK

PRELIMINARY PROJECT PRESENTATION

# TRIDECK

---







“SHAPED  
BY ITALIAN  
CREATIVITY”









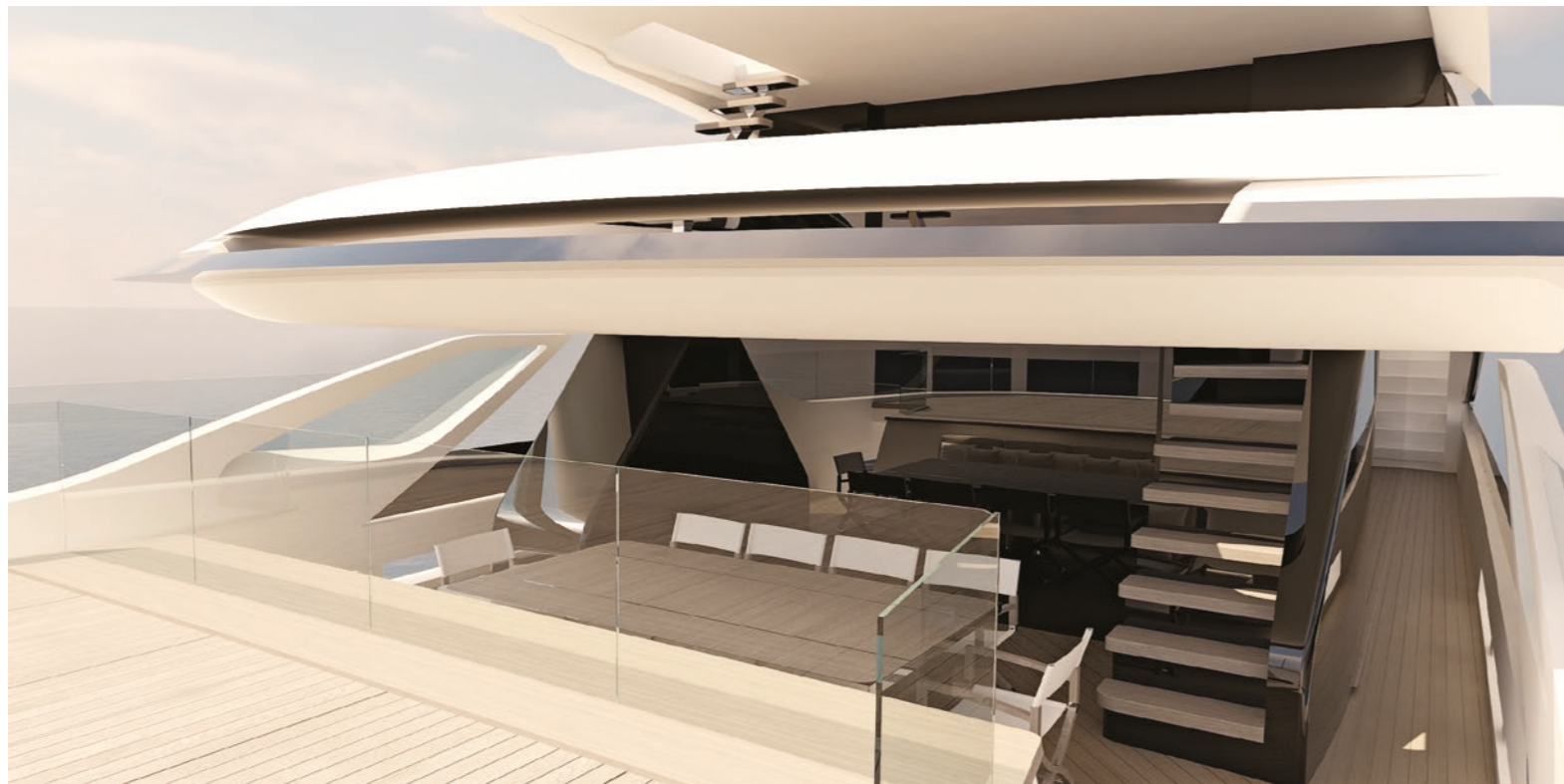
VIEW OF THE COCKPIT - STANDARD LAYOUT VERSION





VIEW OF THE COCKPIT - ALTERNATIVE LAYOUT VERSION





VIEW OF THE COCKPIT - ALTERNATIVE LAYOUT VERSION



VIEW OF THE BEACH AREA





VIEW OF THE FLYBRIDGE



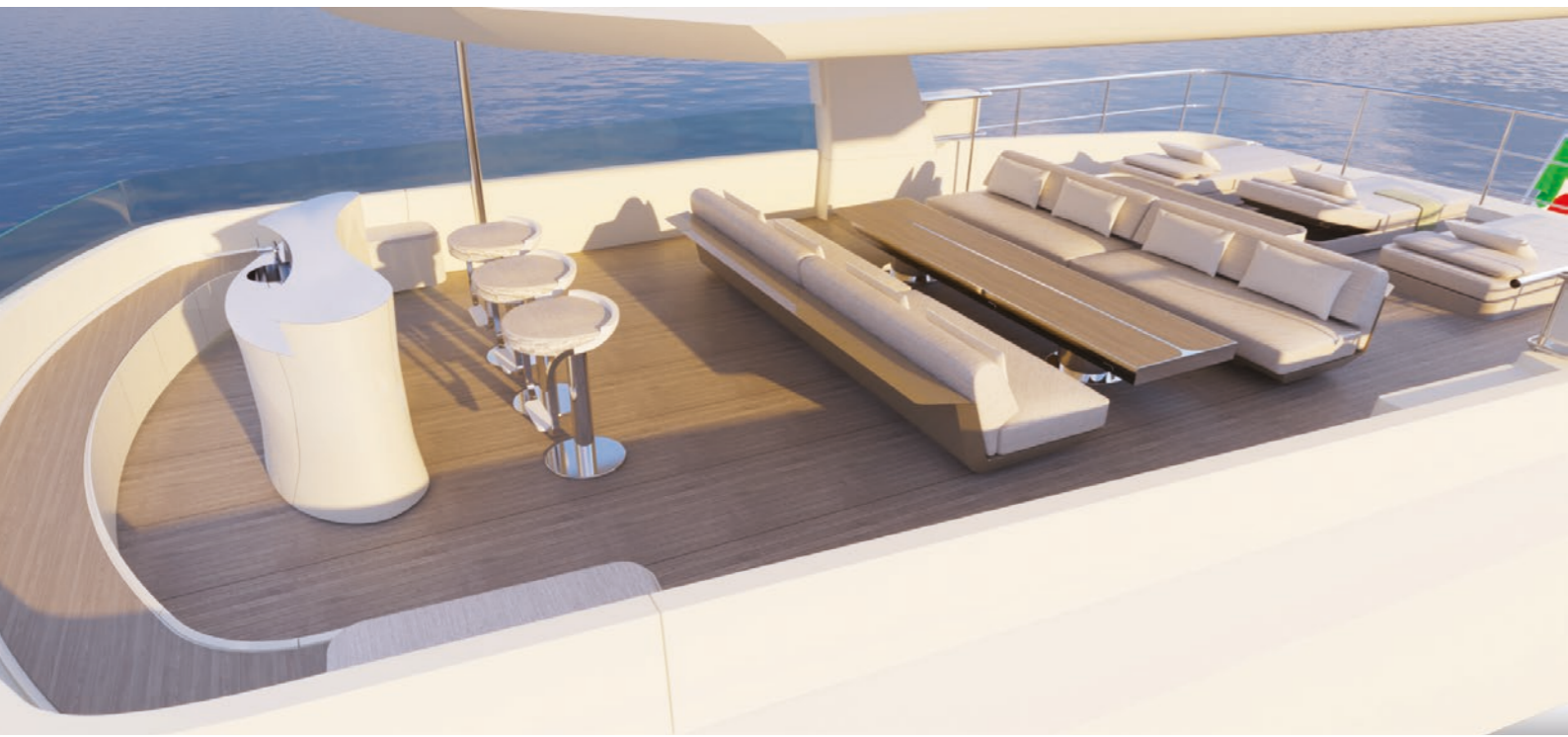


VIEW OF THE FLYBRIDGE  
ALTERNATIVE LAYOUT VERSION





VIEW OF THE FLYBRIDGE - ALTERNATIVE LAYOUT VERSION





VIEW OF THE MAIN DECK SALON



VIEW OF THE MAIN DECK SALON





VIEW OF THE UPPER DECK SALON



VIEW OF THE UPPER DECK SALON



VIEW OF THE UPPER DECK SALON





VIEW OF THE UPPER DECK SALON



VIEW OF THE GALLEY





VIEW OF THE OWNER'S SUITE



VIEW OF THE OWNER'S SUITE







VIEW OF THE OWNER'S BATHROOM  
ALTERNATIVE LAYOUT VERSION





VIEW OF THE LOWER DECK STARBOARD SIDE VIP CABIN



VIEW OF THE LOWER DECK STARBOARD SIDE VIP CABIN







VIEW OF THE GUESTS CABIN  
ALTERNATIVE LAYOUT VERSION





VIEW OF THE UPPER DECK VIP CABIN  
ALTERNATIVE LAYOUT VERSION



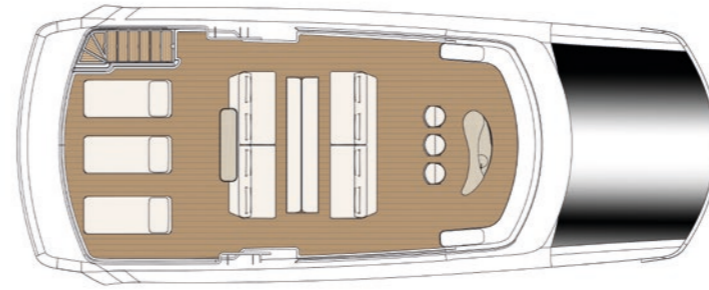


VIEW OF THE UPPER DECK VIP CABIN  
ALTERNATIVE LAYOUT VERSION

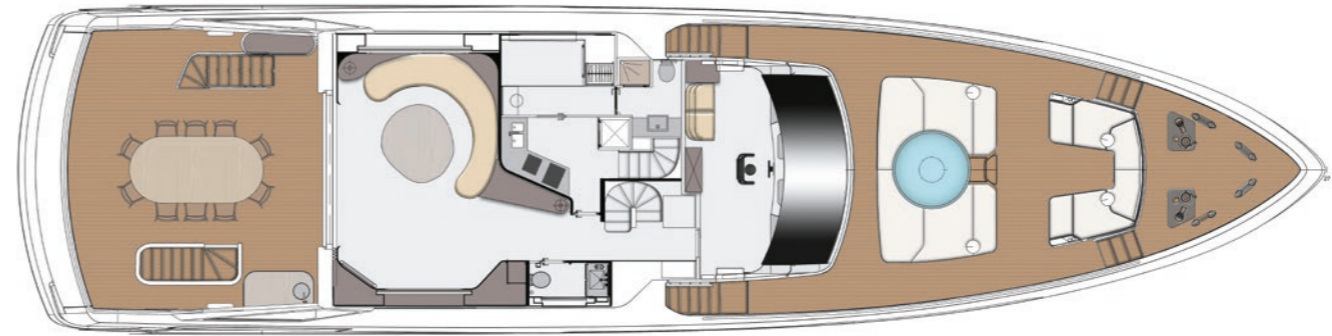


# GENERAL PLANS

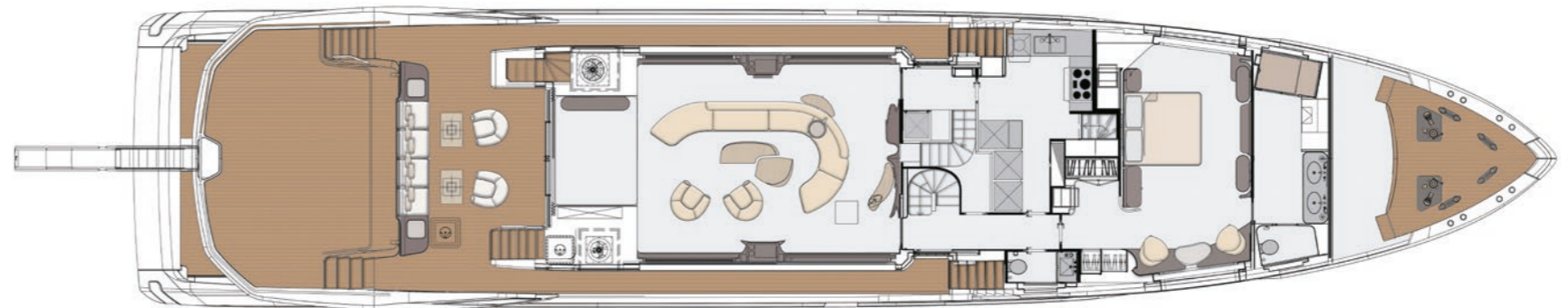
ORIGINAL LAYOUT VERSION



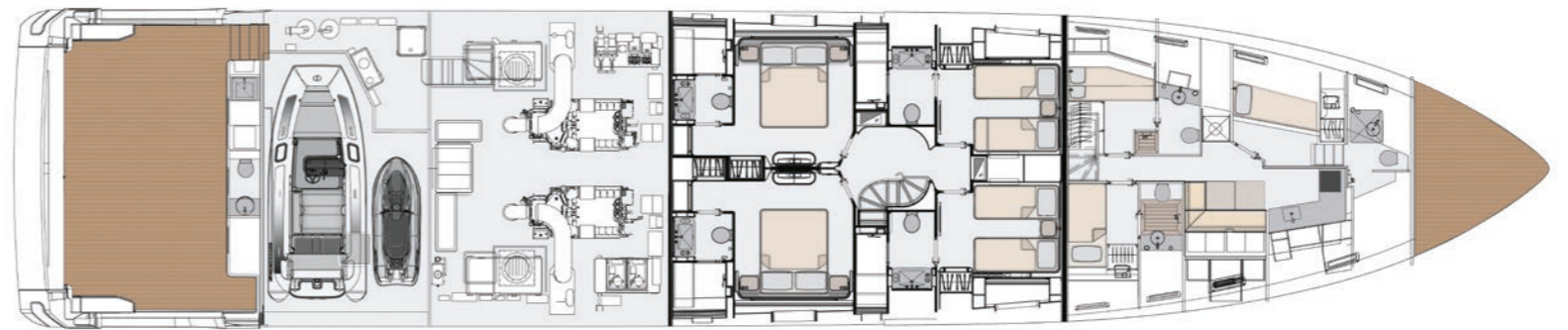
FLYBRIDGE



UPPER DECK



MAIN DECK

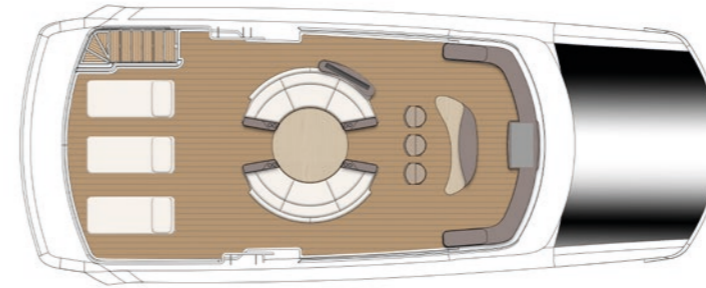


LOWER DECK

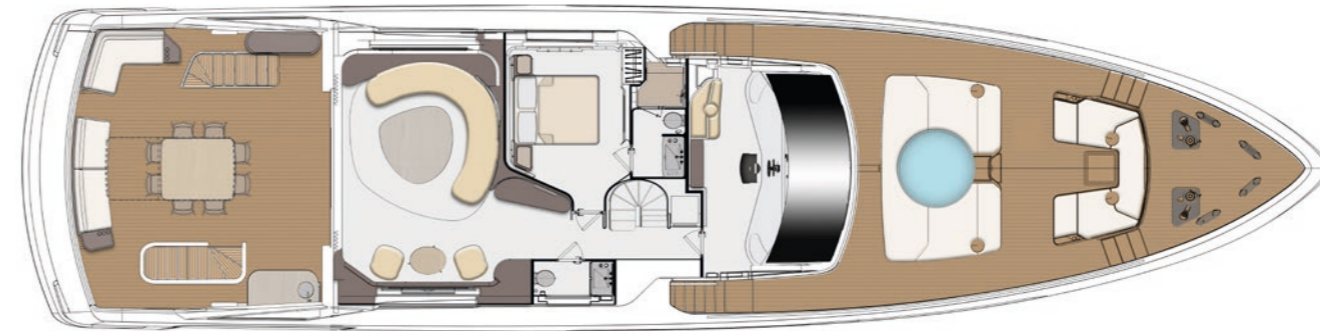


# GENERAL PLANS

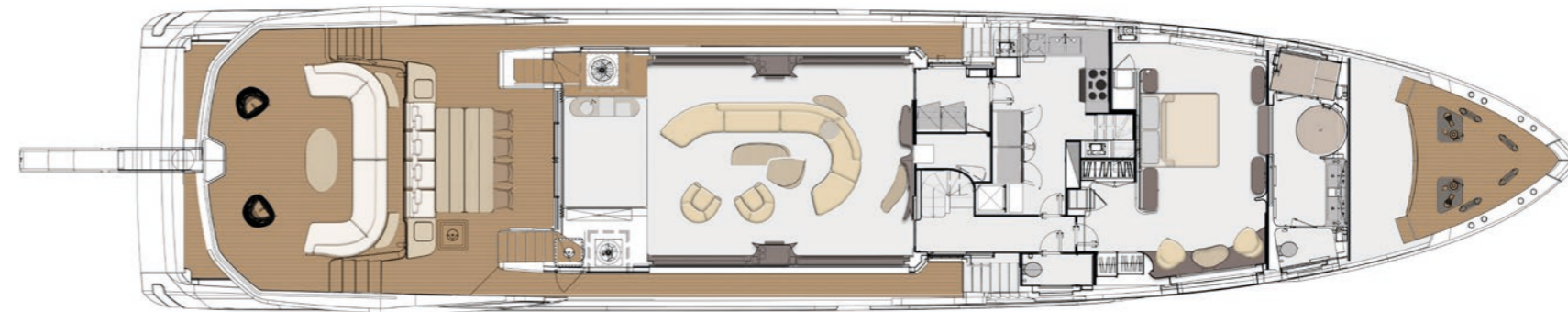
ALTERNATIVE LAYOUT VERSION



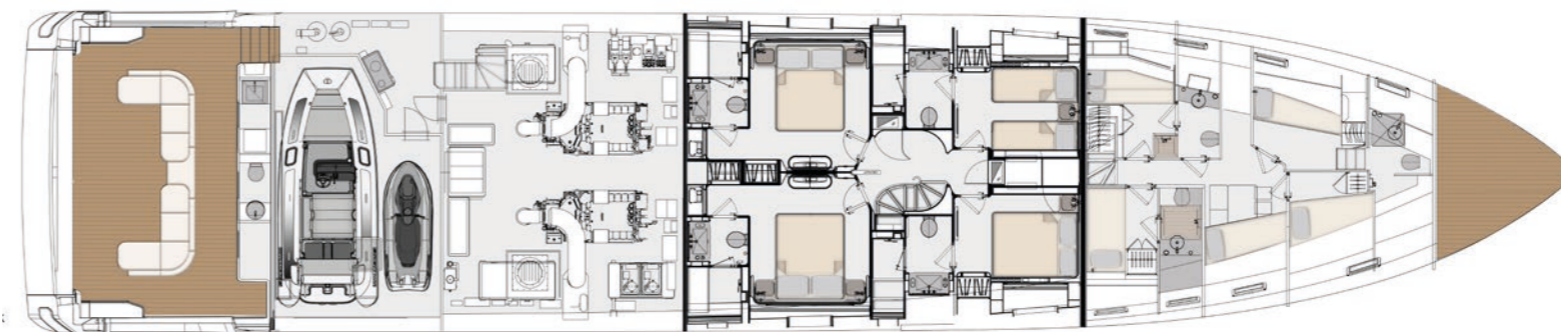
FLYBRIDGE



UPPER DECK



MAIN DECK



LOWER DECK

# MAIN PROJECT DATA



## EXTERIOR

Length overall (handrail included)	38,2 m (125' 4")
Beam max	7,9 m (25' 11")
Draft Tmax	1,8-1,85 m (5' 11" - 6' 1")

## INTERIOR

Cabins	5 + 4 crew 6 + 4 crew
Berths	10 + 6 crew
Heads	7 + 4 crew

## PERFORMANCE

Engines	2 x 2400 mHP MTU 2 x 2600 mHP MTU
Maximum speed	up to 23 knots up to 24 knots
Cruising speed	up to 20 knots up to 21 knots



## TECHNICAL DATA

Total Fuel tanks capacity	23500 l (6208 US Gal)
Total Fresh Water tank capacity	4585 l (1211 US Gal)
Total Black water tank capacity	1610 l (425,36 US Gal)
Total Gray water tank capacity	1930 l (510 US Gal)
Displacement full loaded	approx 195 t (429897 lb)
Exterior Design	Alberto Mancini
Interior Design	Achille Salvagni Architetti
Construction material	Carbon fibre + GRP

Speed performance must be considered as a "target"; cruising speed levels refer to the following conditions: • test displacement conditions: 1/3 load displacement • suction air temperature = 25°C • sea water temperature = 25°C • atmospheric pressure = 103250 Pa • sea condition almost quite (Douglas scale 1) • wind speed of less than 3 kn (Beaufort scale 1) • hull, transmissions, steering and propellers clean • in water with a depth of more than 30 m • liquids inside the tanks adjusted to obtain the right static trim. For different environmental conditions, performance data will be adjusted according to: • ITTC 7.5-04-01-01.2 rev.00 2005 "Full scale measurements speed and power trials - Analysis of speed/power trial data • ISO 3046. For all optional and additional equipment reduction in speed will apply.



**Azimut | Benetti SpA**

via Martin Luther King, 9 - 10051 Avigliana, Torino - Italy

[www.azimutyachts.com](http://www.azimutyachts.com)

Last updated 1.09.2019. This brochure in no way constitutes a contract of sale for the boatyard's vessels to any person or company and is a preliminary brochure prepared in good faith according to the most recent Azimut's rendering referred to the yacht herein represented; therefore the final product could be different according to subsequent Azimut's adjustments and updates. All information contained herein, including but not limited to technical and performance data, illustrations, and drawings, is non-binding and for purposes of illustration only and may not be fully representative of final product. Optional equipment, not part of the standard base product, are depicted and may require separate order. The information in this brochure refers to the boatyard's standard motoryacht models available as of the date of publication. Technical and descriptive information is valid only to the extent that it pertains to the specific vessel that is the subject of a purchase. Contract terms are valid only to the extent that they are contained in a contract of sale. This document is based on information available at the time of publication. Despite efforts to ensure the greatest possible accuracy, the information contained herein may fail to cover all details, omit technical or commercial changes that may have been made subsequent to publication, describe features that are not present, and fail to envisage all circumstances that might occur. Any illustrations, photographs, diagrams and examples shown in this brochure are included solely for illustrative purposes. Due to the different features of each vessel, the boatyard assumes no liability for actual use based on the illustrated applications.