

Beretti

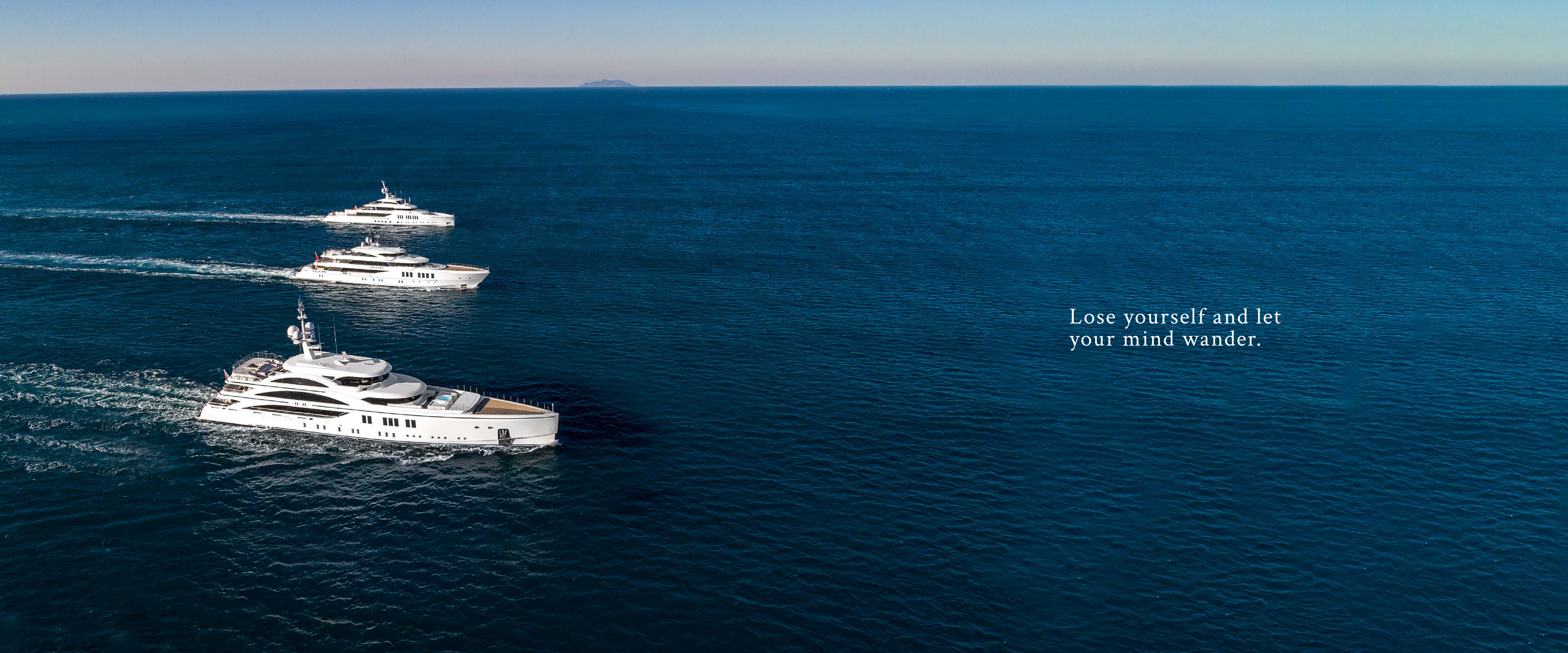
DIAMOND 145

“ We’re here to build
the most beautiful,
reliable, innovative yachts
and to provide support to
their owners, anywhere in
the world.”

Paolo Vitelli
AZIMUT | BENETTI
Group Chairman

Giovanna Vitelli
AZIMUT | BENETTI
Vicepresident





Lose yourself and let
your mind wander.

We turn dreams
into reality, classics into icons,
tradition into innovation,
curiosity into passion,
and yachts into masterpieces.





145+ YEARS OF EXCELLENCE

370+
YACHTS BUILT

*300,000 sq m
of production facilities*

The only fleet ranging
from 29 m to over 100 m

3 GIGA YACHTS OVER 100M
LAUNCHED IN 100 DAYS



The House *of* Yachting

The best possible yachting experience happens here.

Benetti provides the best selection of yachts, where time can be appreciated and quality is always present. Each yacht is defined by clever design, that never sacrifices functionality or comfort. Every detail produces a unique vision whilst maintaining a common thread of the heritage before it.

Here is where your next best memory takes place.

Welcome on board the Diamond 145



DIAMOND 145

Class

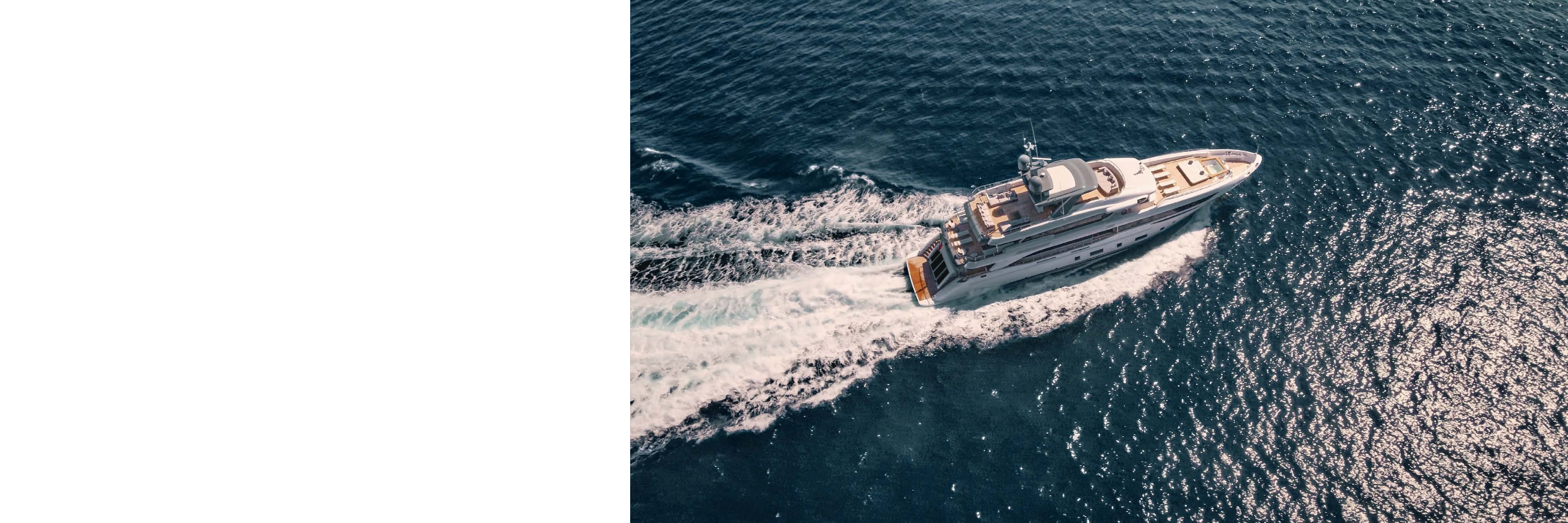
For pioneers.

For pleasure seekers and romantics.

For lovers of tradition with vision to the future.

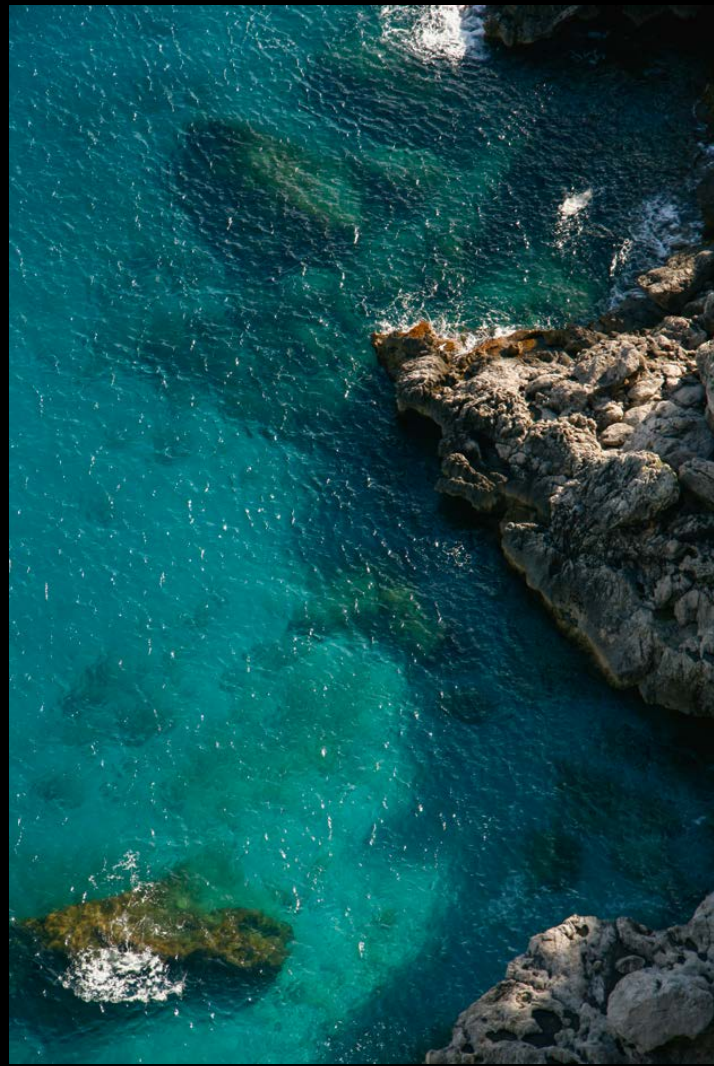
For those who desire the very best without compromise in cruising or comfort.

Enjoy every inch of the Diamond 145.



The best time *of* your life
on a timeless vessel







Clean lines that are instantly recognizable

“Diamond 145’s size offered the opportunity to develop an imposing vessel with a majestic bearing and highly contemporary detailing, combined with an approach to style that reflects the idea of a timeless yacht”.

Giorgio M. Cassetta

His work is driven by the desire to offer a contemporary take on the classic style



The perfect formula

Benetti masters the formula that defines beauty. Behold the magnificence of this impressive vessel as you discover every lovely detail. From a micro and macro level the Diamond pushes the edges to a divine proportion.



SUNDECK

This is not the average sundeck

Can you picture over 102 square meters perfectly crafted for dining, entertaining sunbathing, or simply taking a break by yourself? Fully equipped with a bar and extensive seating, this Sundeck is a dream come true for anyone onboard.



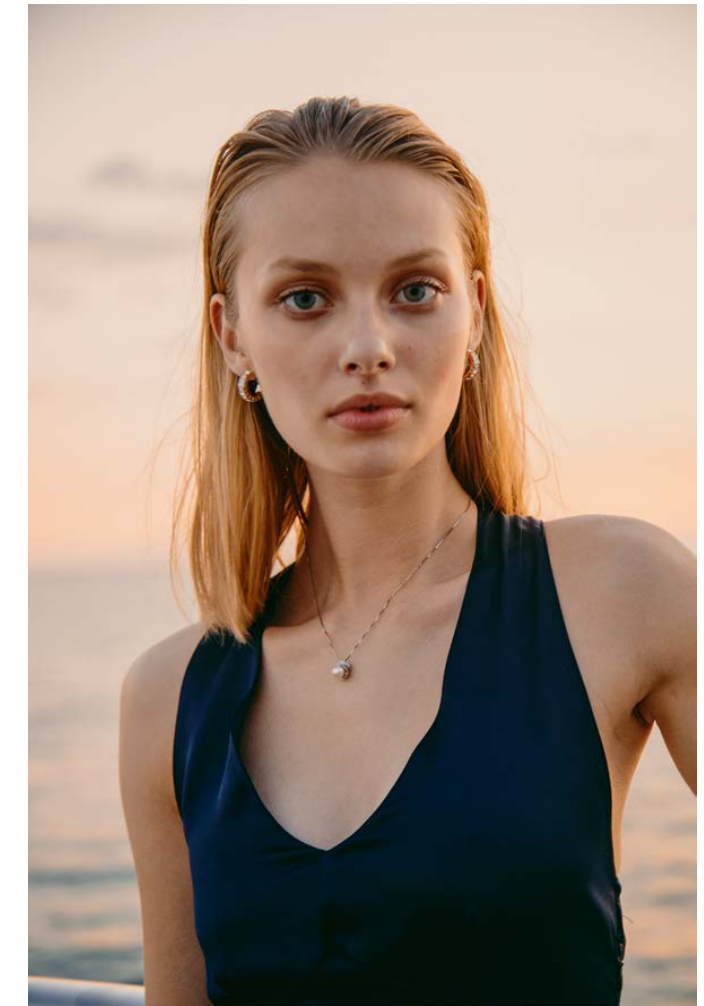






A graceful design made
to bring you pleasure.
A space without boundaries.
Step aboard *and* embrace
your new freedom.





Gorgeous *and* everlasting

The relationship between light and darkness makes the exterior of the boat an innovative example of a neoclassical style. The long, fierce shape gives the Diamond 145 a royal profile that will never elapse.





A smooth sequence of decks

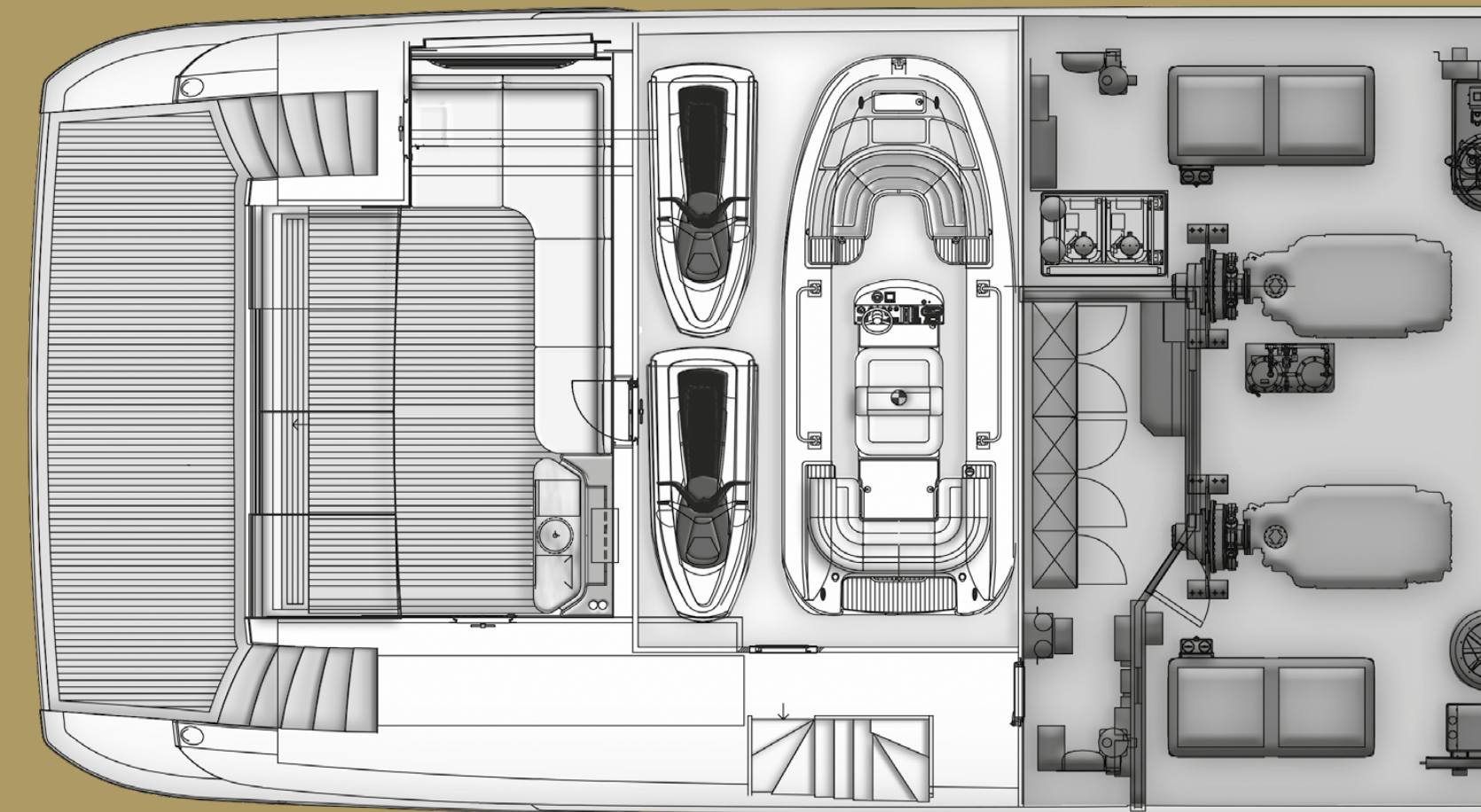
From the sky to the water, you can seamlessly experience each level without interruption, walking throughout the space as a whole.





The hidden garage that creates the beach area

Separated from the rest of the yacht, the generously sized garage has a distinctive trait that allows to make room for the exclusive beach area in the stern. With its access on the side of the yacht, it is the perfect location for easy access to all water toys stored and creates maximum use of space.





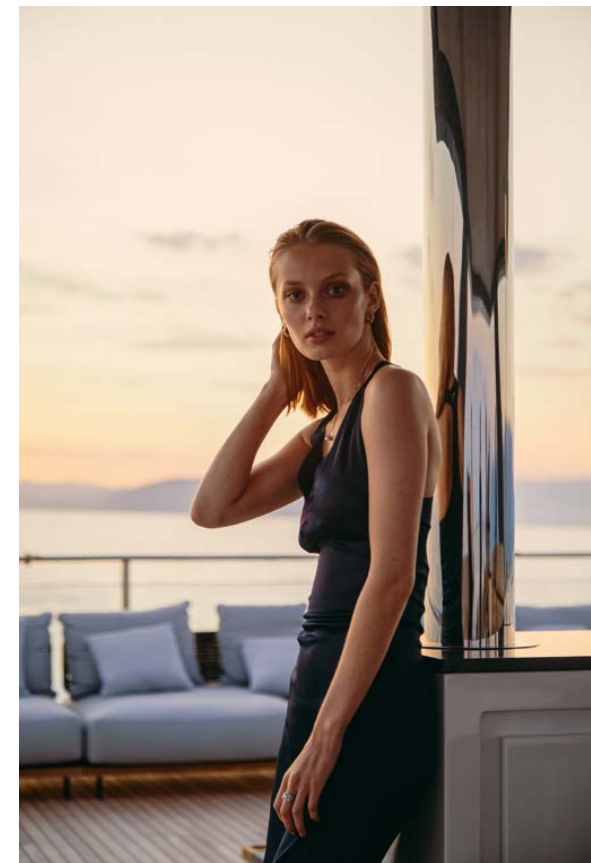
BEACH CLUB

The extraordinary beach club

Open the door to a golden dawn. Fully furnished with sofas and a bar, this open area is just a step away from the sea and allows for a private oasis that can be enjoyed even while cruising.



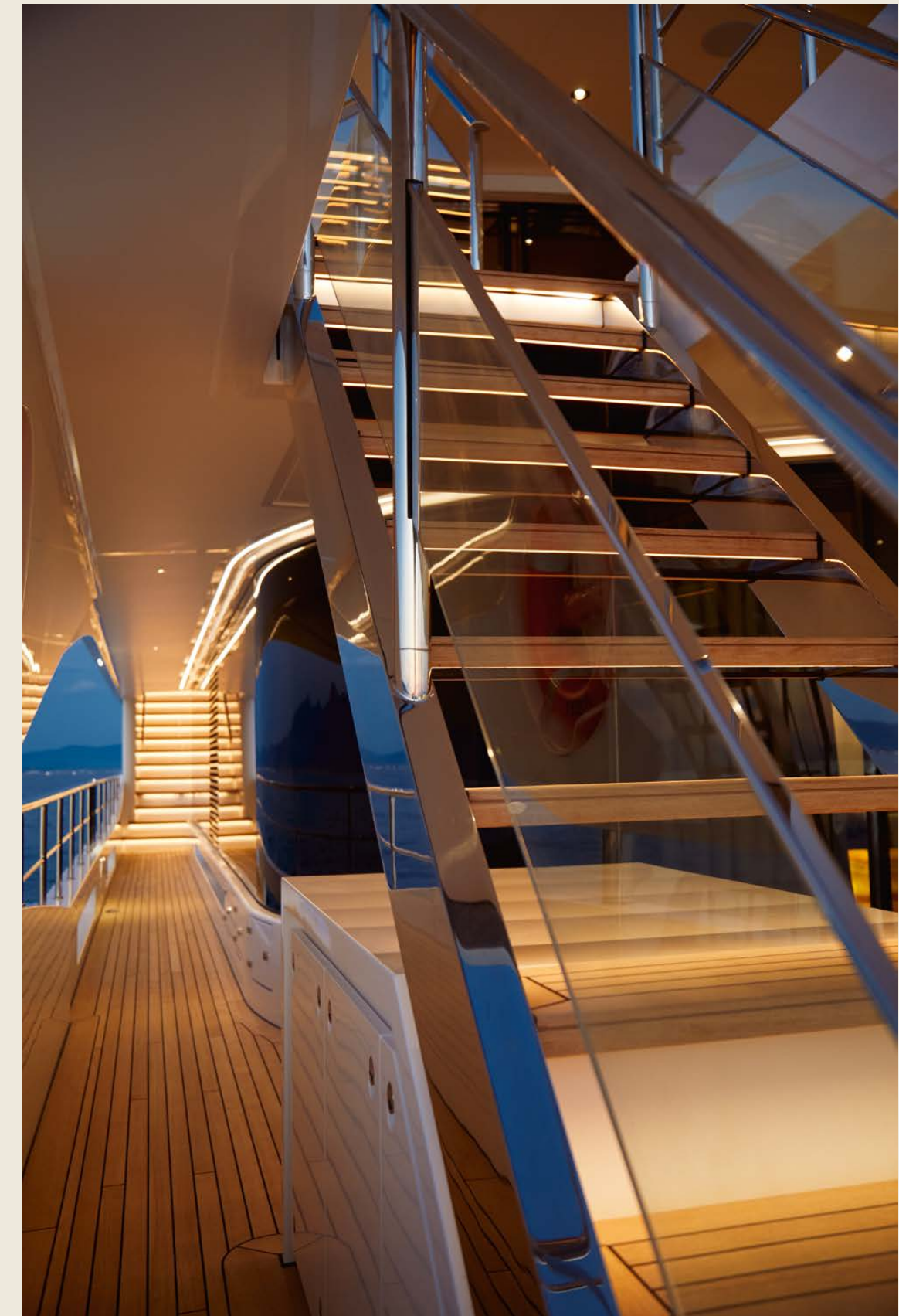
Triumphing over time is an art form



AERIAL STAIRCASE

Step *by* Step on a masterpiece

This is not the usual staircase, but a distinctive element of design that brings glamour to the whole structure. Made of glass, teak and stainless steel, it gracefully connects the main deck to the sundeck without interruptions.





LIGHT DESIGN

The gem that glows in the dark

Every surface is touched just by the right amount of light. From the staircase to the glass doors, Acqualuce studio enlightened the external features to make them shine even more. At night, it cannot be missed: A Diamond just stands out.





FOREDECK LIVING AREA

Pursuing your leisure time

You want your moments of leisure to happen here, surrounded by beauty and comfort. Relaxation is key for your experience aboard, and you deserve it.





The bow on the Upper Deck creates the perfect picture for all that lies ahead. Featuring a modern pool design and numerous lounge and sun bathing areas, enjoy this impressive space that opens to the best scenic views onboard.

MAINDECK LOUNGE

Let the main deck
outdoor lounge amaze you





OBIETTIVO50

Manufacturing excellence
for a long-term view

We proudly build the classics of the future, which stand the test of time without losing any charm or functionality. We aim to increase the level of comfort and ensure it stays high over time, to reduce and facilitate maintenance requirements by using components of the very highest caliber, and create intelligent outfitting solutions that make it easier to update decor. This approach transcends passed materials and into the core understanding behind the way our engineers build, our designers create, and how our products are brought to life.

Future owners can and will give their personal touch to the yacht, which will pass from hand to hand, but always keep the essence of what it means to be built by Benetti.

Benetti gave this mindset a name: Obiettivo 50.



BENETTI OBIETTIVO50 DESIGN APPROACH

The effects of this design approach are there to see as soon as you go on board Diamond 145: when at sea, the level of silence is simply exceptional and ranks this yacht at the top of its category. This has been achieved by reducing noise and vibration to its bare minimum at each level. A transmission system fitted with an elastic coupling and thrust bearings, and floating floors and bulkheads on each deck, both help create a more soundless experience for serenity onboard. From the bypass electrovalve fitted to the engine idling exhausts, to soundproof discharge piping in the main onboard spaces - the Diamond 145 is built to superyacht standards.

Moreover, the complex Air Treatment Unit system (ATU) is equipped with filters for particles and water abatement, ensuring that the air throughout the yacht (owner, guest and crew areas) is always kept fresh and clean by changing it six times an hour.

The GRP used for the boat's exteriors, like all the models in the Class category, is finished with epoxy fillers and painted white to achieve outstanding levels of gloss and aesthetic finish, and to guarantee long lasting resistance to UV rays, marine salt, and abrasion. This painting process is checked over and over again during the production of the yacht and faces several tests before being finally accepted.

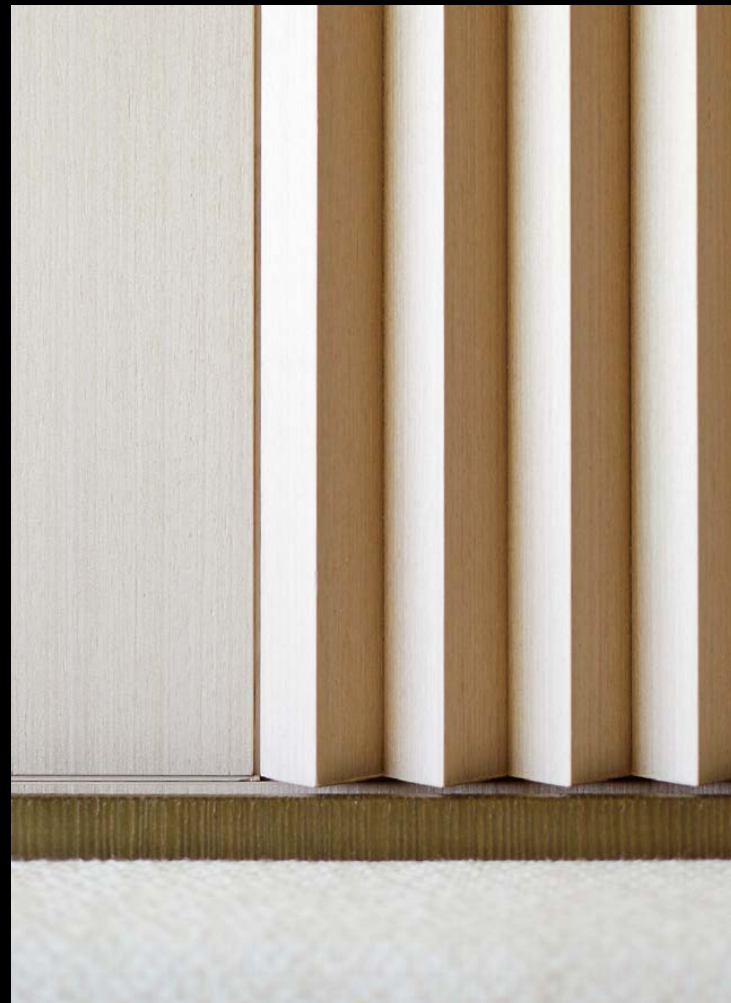
For the same reason, the stainless steels on the exposed decks are all hand polished, piece by piece.

Inside, all decorative wall and ceiling panels are meticulously identified by a barcode and applied using the fitlock system. This level of attention to detail ensures the possibility for rapid repairs, as well as, enabling future owners to change the interiors more easily.



EACH DETAIL IS A TRIBUTE TO OUR WISH TO BUILD

The obsession for quality leads the Benetti engineers to dedicate the same level of study and attention to detail for any yacht produced. Whether it be a 30 meter fiberglass yacht or a 100 meter steel giga yacht, the beauty is found in our craftsmanship, with the Diamond 145 pushing the limits of excellence. The result is a purposeful and unique product of great class, meant to sail the seas for decades to come.

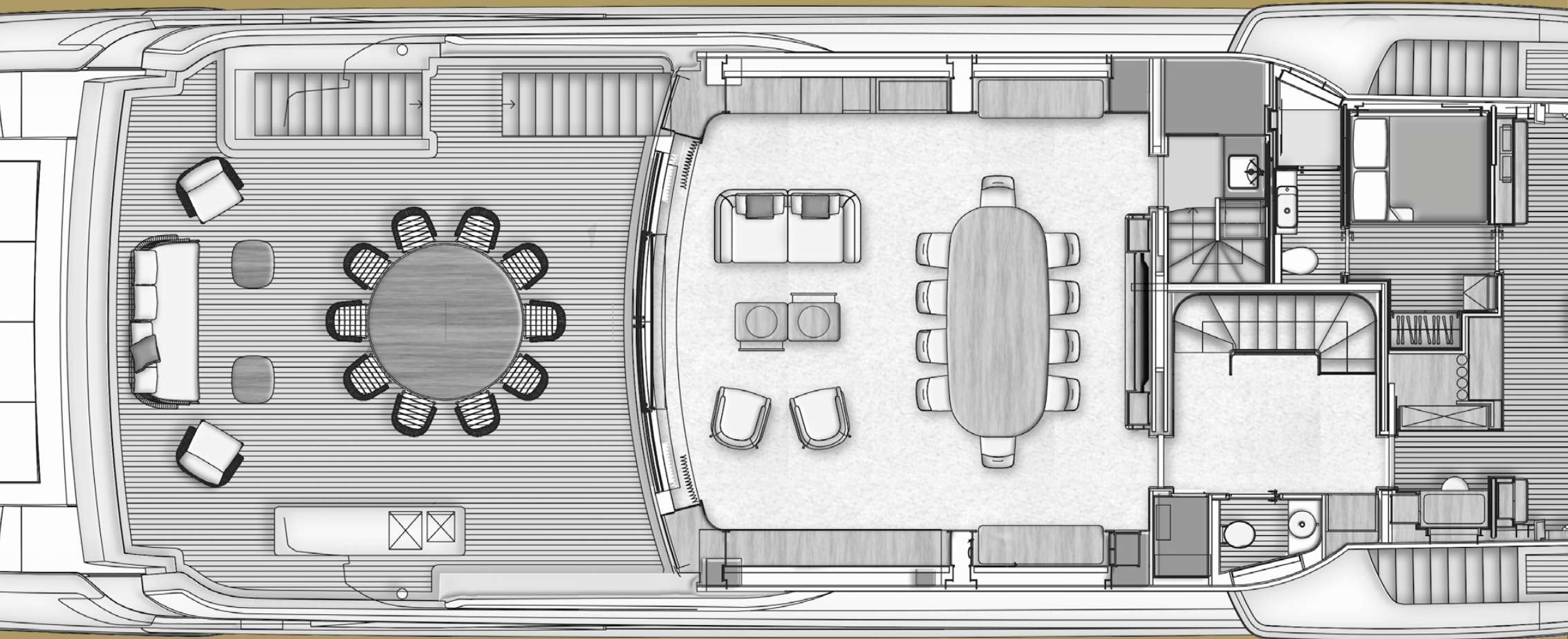


VESSELS WITH EVERLASTING BEAUTY



The best things in life are made to last





AFT UPPERDECK LOUNGE

Consistency is the sweetest rule

Embrace the continuity. You will never be fully aware of where the indoor ends and where the outdoor begins, they are simply part of a seamless environment set to create peace of mind.









Meet our timeless elegance

Authenticity is eternal.

Trust us to create the truest version of your dreams,
built for a lifetime.





MAINDECK LOUNGE

Sometimes shape is also substance

The Main deck too follows the theme of perfectly balancing the indoor and outdoor spaces.

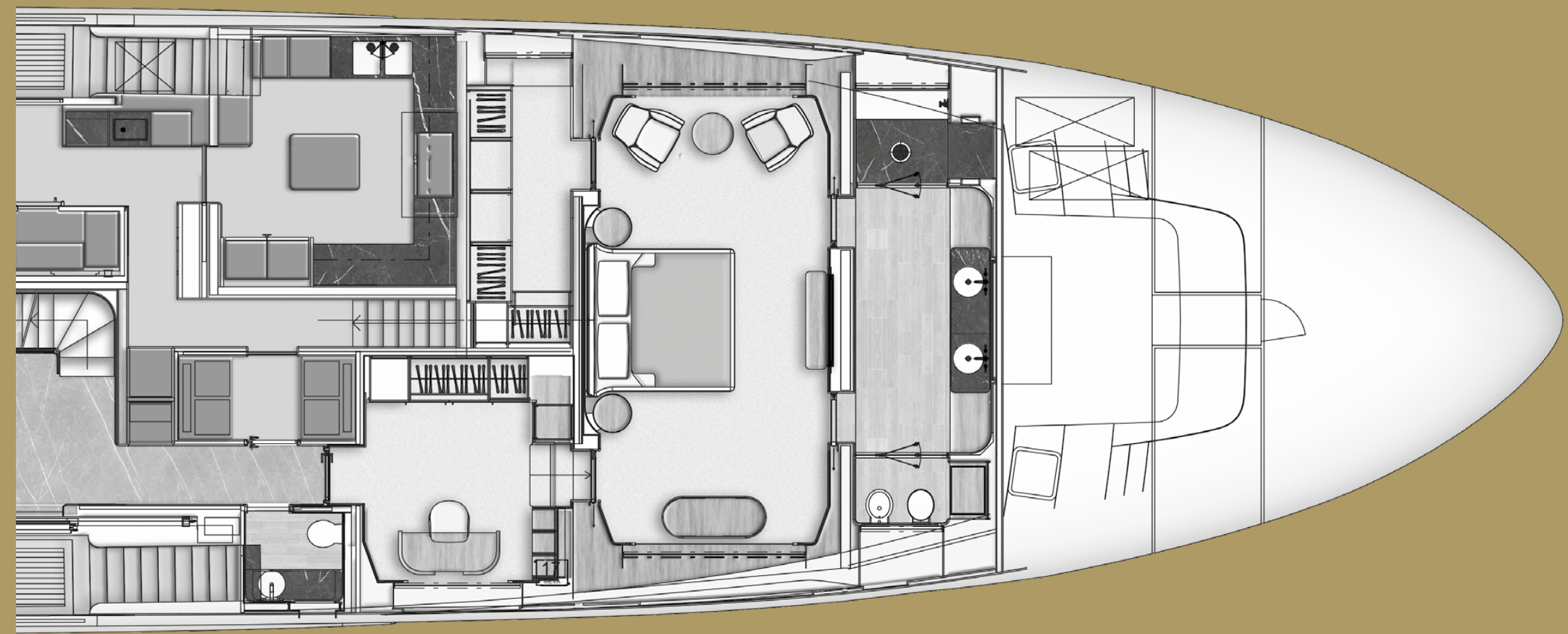
The wide and spacious opening to the main deck lounge was achieved by moving the lateral trunks of the yacht further forward so that the aft area of the lounge is open, light, and voluminous.





Discover the owner's suite

This is not a single room, but a collection of the richest areas onboard. Enter your trusted haven - where peace, comfort, and joy are part of each moment.





True elegance is
impervious to trends









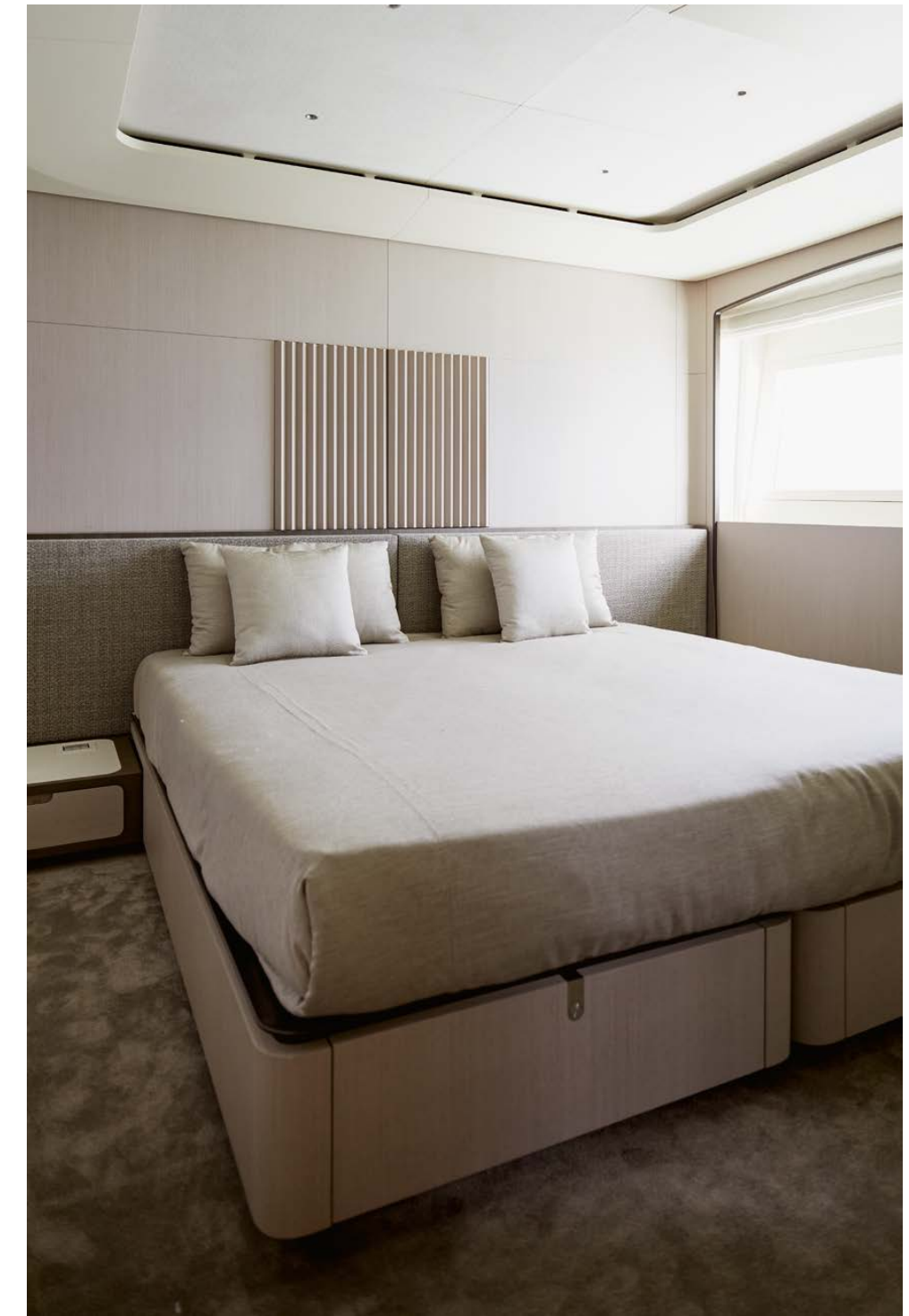
The finest materials to reach
the longest-running value

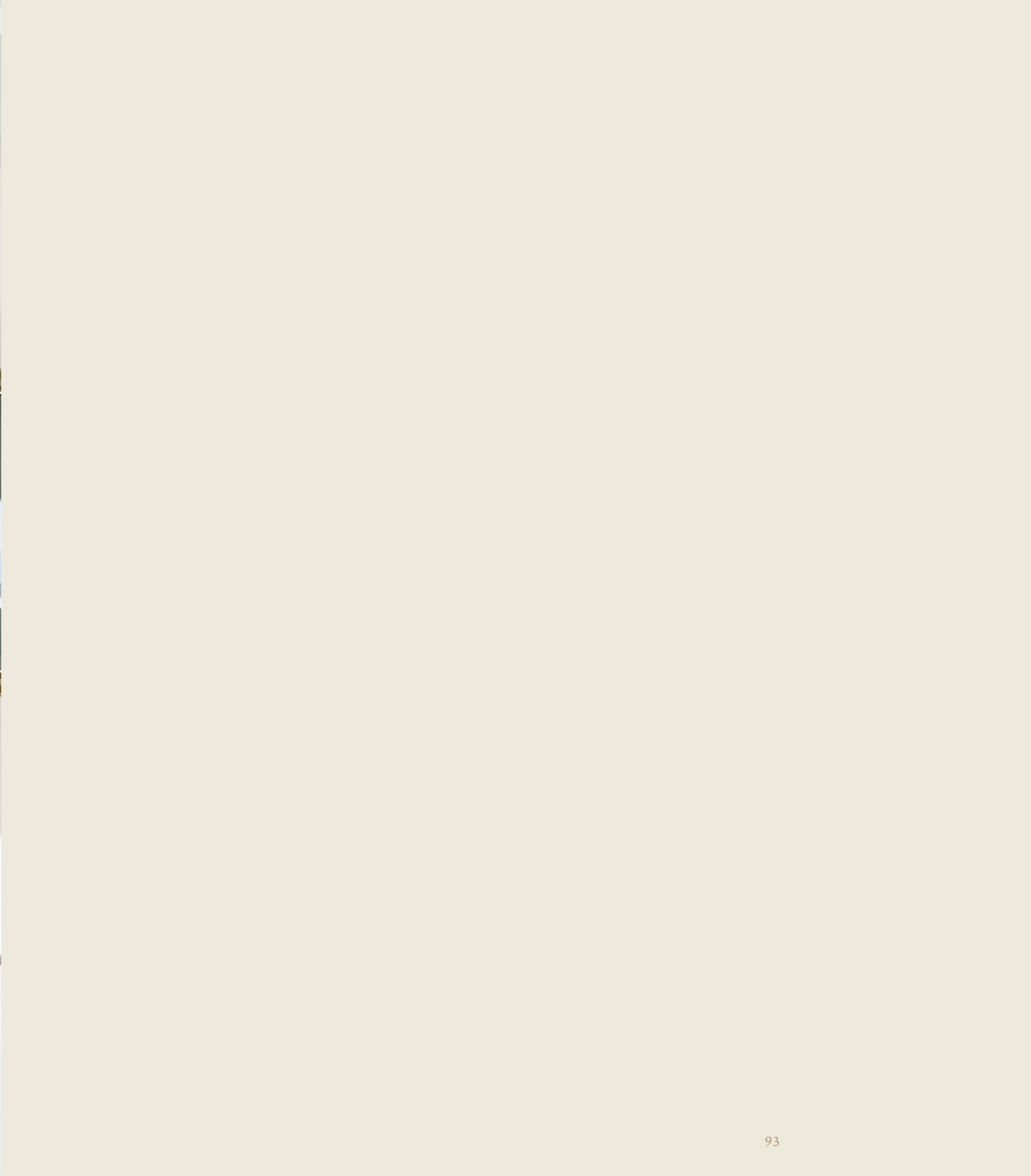




VIP STATEROOMS











WHEELHOUSE

The light bridge: an engineered beauty

The Light Bridge console stands at the pilothouse in the Upper Deck. You can literally walk around this iconic object, admiring its carbon fiber structure that combines lightness and strength. Its ergonomic profile makes navigation a simpler and amusing experience. The helm is not just the control point, but the bridge that connects the perfect shape of the shell with the inner advanced features. Technology can be beautiful, and perfectly integrated with the philosophy underneath the yacht.



This particular solution is the fruit of the first collaboration between Benetti and Seastema, a leading player operating in the field of ship automation, navigation and onboard electronics in all the main sectors of the marine industry. Unlike a traditional bridge, all the wiring has been channeled through a trunk, to a centralized air-conditioned rack room, located below deck.

This allows for all of the NAVCOM devices and Audio/Video equipment, that is usually installed in the VIP guest cabins, to be stored in the same place in its own area, creating more space in both the bridge and cabins. Another advantage is easier maintenance, since technicians can work standing up in comfort, assuring optimum performance even in the hottest climates.



DIAMOND 145

Main technical data

CONSTRUCTION MATERIAL	GRP
LENGTH OVERALL (LOA)	44.06 mt / 144' 7" ft
MAXIMUM BEAM	9.05 mt / 29' 8" ft
MAXIMUM DRAFT	2.30 mt / 7' 7" ft
FULL LOAD DISPLACEMENT	352 tons
FUEL CAPACITY	60,000 l / 15,850 US gals
FRESH WATER CAPACITY	8,000 l / 2,113 US gals
MAIN ENGINES	2 x MAN 12 V 1,400 HP (1,029 Kw) @ 2,300 rpm
MAX SPEED	15 Knots
SPEED AT 85% OF MAX P POWER	14 Knots
RANGE	4100 nm @11 kn
GENERATORS	2 x CAT C7.1 400 V AC / 3 ph / 50 Hz / 118 kW
BOW THRUSTER	CMC BTM85/85 kW / 400 V AC / 3 ph / 50 Hz
STABILIZERS	Fins (CMC SE120) stabilization underway and at anchor
PROPELLERS	2 x five nickel – aluminium – bronze blade and hub
EXTERIOR STYLING & CONCEPT	Giorgio M. Cassetta
INTERIOR DESIGN	Benetti Interior Style Department
ACCOMMODATION FOR OWNER & GUESTS	10 Persons, 5 Cabins
ACCOMMODATION FOR CREW	Up to 8 Persons, 5 Cabins

BUILDER

Benetti Shipyard Via M. Coppino, 104 Viareggio (Lucca) - Italy
 P +39 05843821 sales@benettiyachts.it - benettiyachts.it

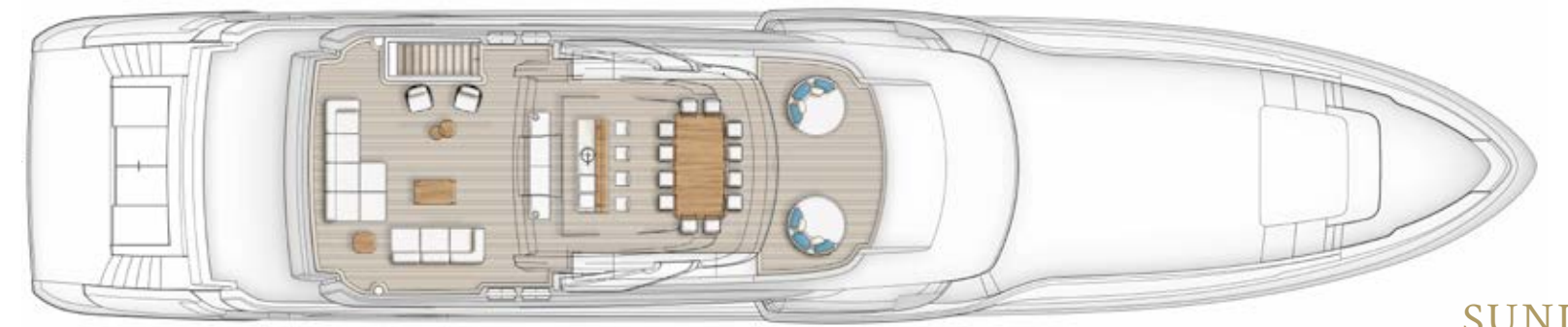


Created for an expert and demanding owner, Diamond 145 has a profile that exemplifies the revisitation of neoclassical style. The relationship between light and dark-coloured volumes encourages the notion of powerful, extended shapes, giving the yacht a look that is both majestic and consistent with the Benetti's heritage.



DIAMOND 145

General Arrangement



SUNDECK



UPPERDECK



MAINDECK



LOWERDECK

Dreams come
in many shapes.

CLASS



DELFINO 95



MEDITERRANEO 116



FAST 125



DIAMOND 145

OASIS



OASIS - COMING NEXT



OASIS 40M

B.YOND



B.YOND 37M

B.NOW



B.NOW 50M



B.NOW 55M



B.NOW 63M



B.NOW 68M

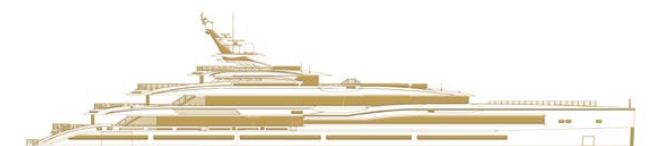
CUSTOM

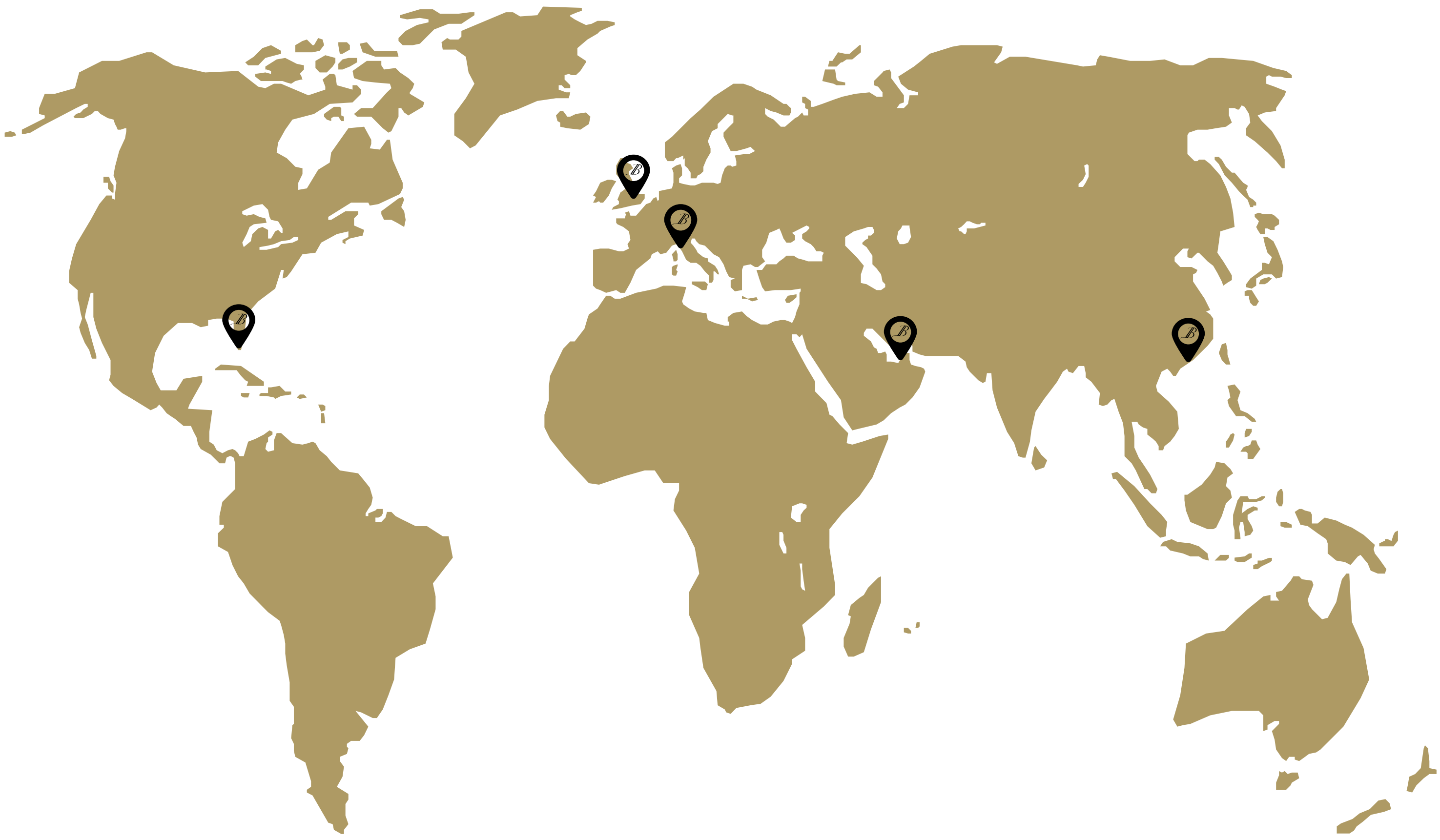


MEGA | FROM 45M



GIGA | FROM 80M





→ Italy

VIAREGGIO *Headquarters*

Via Michele Coppino, 104
55049 – Viareggio (Lucca)
Tel +39 0584 3821
Fax +39 0584 396232
info@benettiyachts.it

→ Italy

LIVORNO *Yards*

Via Edda Fagni, 1
57100 – Livorno
Tel +39 0586 415600
Fax +39 0586 834053
info@benettiyachts.it

→ UK

LONDON

12 Hay Hill
Mayfair
London W1J 8NR
Mob: +44 7788 925 337

→ USA

FORT LAUDERDALE

Benetti Americas
1535 SE 17th Street – Suite B 101
Ft Lauderdale, FL 33316, USA
Tel +1 (954) 687 9436
info@benettiamericas.com

→ APAC

HONG KONG

Level 27, World Wide House,
19 Des Voeux Road,
Central, Hong Kong
Tel +852 3973 5996
Fax +852 3977 0800
contact@benettihk.com

→ UAE

DUBAI

Jumeirah Business Center 2
JLT, Dubai
Tel +971 5555 24 852
Fax +971 4 439 0185
nabil.eljammal@benettiyachts.it

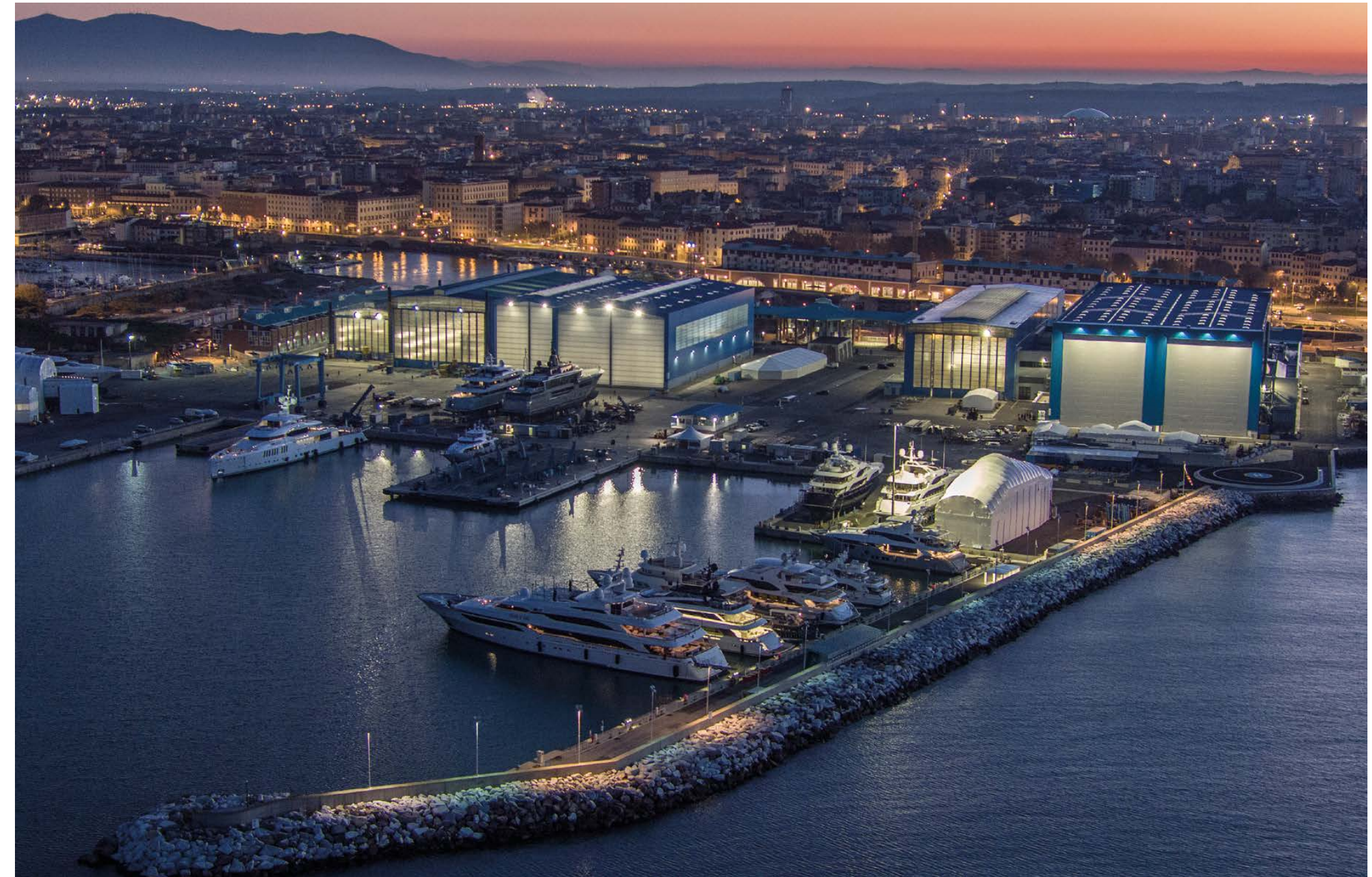
VIAREGGIO

Headquarters and shipyard



LIVORNO

Shipyard



LUSBEN



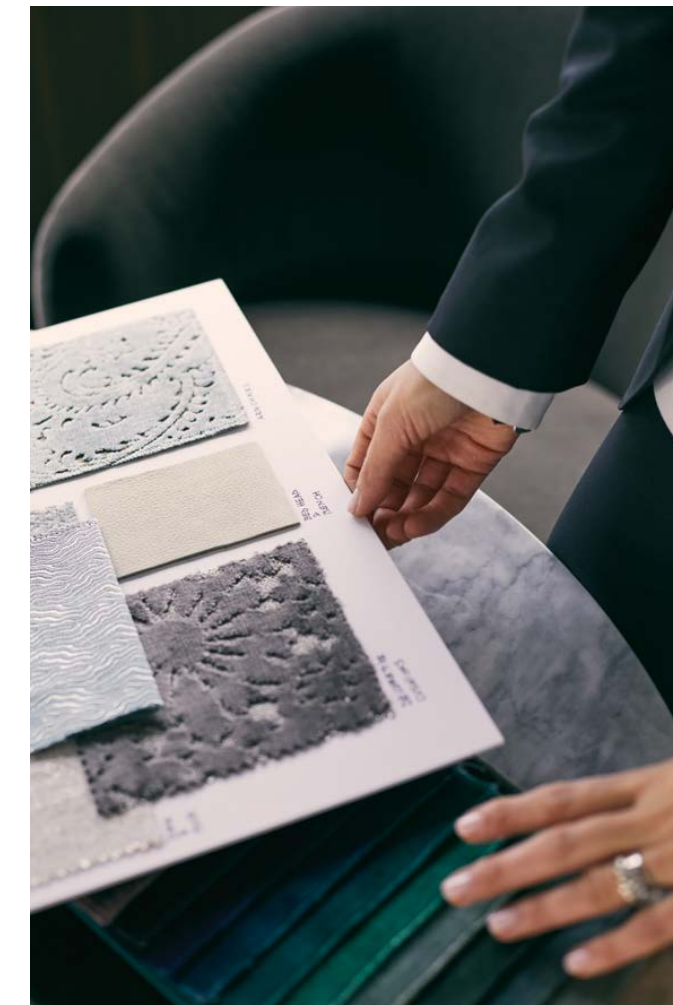
Your yacht will live many lives with our refit & repair service. Thanks to a team of experts, Lusben can take every challenge and offer you a true plan of rebirth. And while waiting for the redress to be done, your crew can enjoy the whole Lusben experience visiting the surroundings of our shipyards in Viareggio and Livorno and letting the staff to take care of the visit. Lusben's mission is to make your vessel even more efficient and better looking. And we are on top in the world at it.



YACHTIQUE



Hospitality is a habit, and it is so lovely to get used to it. As a natural offspring of this outlook on life, Yachtique was born: an efficient host of customization services made to assist its clients with an exceptional engagement. This strategic division has become a trusted ally for owners who demand an extra air of individuality and exclusiveness on their vessels. A wide-ranging team of designers enhance the yacht settings to accomplish a custom-made, more cohesive environment that matches the owners' taste. From the choice of a personalized color palette or the selection of refined finishing materials, the services also include collecting an assortment of household items such as plates and cutlery, bed sheets, towels, and even houseplants – to make sure that everything onboard can warmly welcome the owners and their guests on arrival.



This brochure shall not constitute in any circumstance whatsoever any offer by the shipyard to any person or be incorporated into any contract. Any and all information contained in this brochure, including without limitation all technical data, performance, illustrations and drawings, are just a rough guide and they are not contractual and refer to standard models of motor yachts built by the shipyard and have been updated by the shipyards as of the date of issue of the brochure. Therefore the only indications binding on the seller are contained solely in the sale agreement and in the relevant specific manual. This brochure is based on information available at the date of issue. Notwithstanding all efforts to ensure accuracy, the information contained in the brochure may not cover all details, technical-commercial changes subsequent to the date of issue, nor accurately foresee or report all possible scenarios.

Displays, photos, schemes, designs or examples contained in this brochure are solely and exclusively reproduced to highlight the information contained. Due to the different characteristics of each yacht, the shipyard declines any and all liability for any use thereof on the basis of the information contained in this brochure.

Credits | Photography by Benetti Shipyard Archive and Photographers Michela Locci
Print by Arti Grafiche Parini

Benetti SpA via M. Coppino, 104 - Viareggio (Lucca) Italy - Phone +39 05843821 sales@benettiyachts.it - benettiyachts.it

AZIMUT | BENETTI
GROUP

