

AZIMUT
Grande


— 25 —
METRI

AZIMUT
Grande





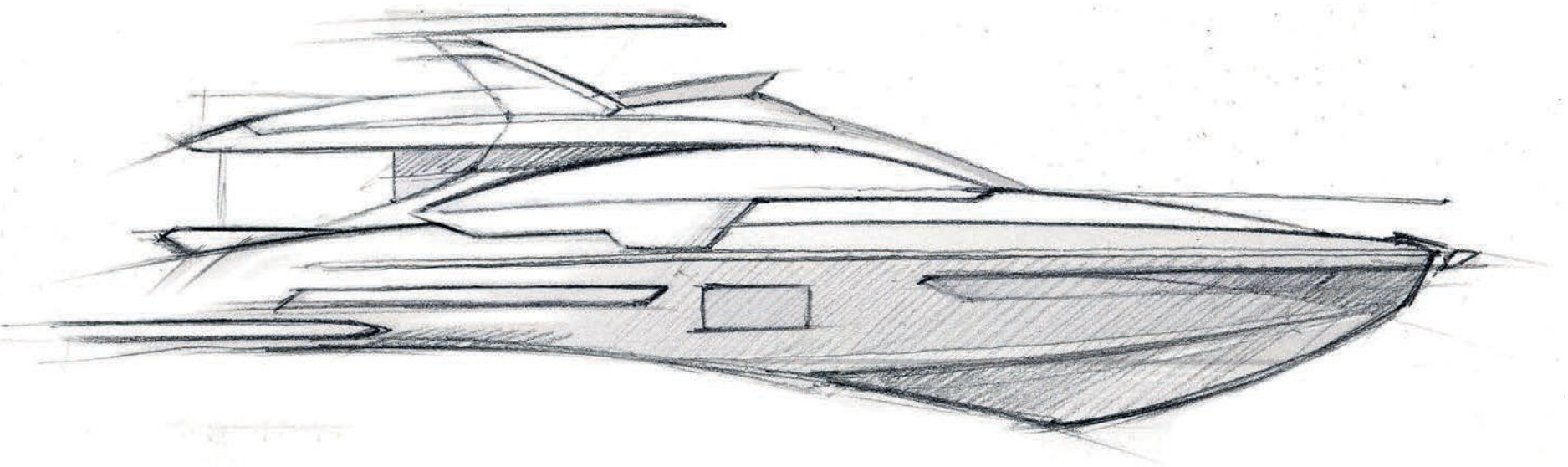
“SHAPED
BY ITALIAN
CREATIVITY”

*The Azimut Yachts way is knowing how to view
the world from ever changing points of view; to
seduce through ingenuity and beautiful lines: the
ultimate expression of Italian Made excellence.*





SCULPTED
BY **THE WIND**





A beguiling mix of aggression and seduction in Stefano Righini's design come together to create a sensual contour which might have been sculpted by the wind itself. Elegance and informal charm mark out the Azimut Grande 25 Metri as a classic two-deck yacht, with the generous volumes of an imposing motoryacht, totally separate crew passageways and a garage able to accommodate a four-metre tender.

A FLOW OF LIGHTNESS

In designing the smooth, fluid interior of the Azimut Grande 25 Metri, Achille Salvagni has favoured gentle colours which flow naturally, sweeping curves over static geometrical design and furnishings which seem suspended in mid-air. Coloured lacquered surfaces have been meticulously calibrated to achieve unprecedented standards of discreet refinement.



Living area view

GRANDE

25 METRI









ELEGANCE
AND
SOPHISTICATION







Wide, airy exteriors designed for open-air living foster a deep and enduring relationship with the sea.



Flybridge and cockpit dining area









A LIGHT
ARCHITECTURAL
TOUCH FRAMES
**THE WONDER
OF THE SEA.**













Lounge version with informal dining







View of the main deck (lounge version)









In an original twist on the classic living area layout, the typical separation of sofa and dining area makes way for a single refined space decorated with care and style. In the absence of inside dining, there is ample space for two living areas but if needed, the coffee table can be raised to become a spacious dining table for eight. A more traditional layout with separated living and dining area is also available.



FLOODED BY **LIGHT**
AND DEFINED BY **GENTLE,**
FLUID LINES, THE INTERIORS
CREATE A **SOPHISTICATED,**
SOOTHING ATMOSPHERE.
ALL FIVE SENSES ARE
STIMULATED THROUGH
TEXTURED SURFACES AND
LIGHTING, **COLOURS** AND
SHAPES WHICH TAP INTO A
MYRIAD OF **EMOTIONS.**







The internal wheelhouse is completed by a chart table with an optional privacy partition enabling it to be used as a crew mess during the day





AUDACIOUS
AND
UNEXPECTED







View of the full beam owner's suite





The interior design features sophisticated furnishings and carefully selected unique pieces.





View of the owner's suite





Side view of the light-filled cosy living area in the owner's suite, complete with vanity table.







COLOURS

GENTLY UNFURL



View of the forward VIP cabin





*Simple shapes and
impeccable choice
of materials*



Forward VIP cabin



View of guest cabins

*The art of
hospitality*



Technical features



CARBON TECH

Carbon fiber is the design choice to provide increased volumes and extended surfaces within same weight ranges, granting excellent levels of static and dynamic stability. Azimut Yachts pioneered carbon fiber extensive use in all its collections, achieving better performances in the water and unprecedented comfort onboard. Roll momentum can be decreased from 3% to 15%. On Azimut Grande 25 Metri the flybridge, superstructure, hard top, radar arch and transom are pure carbon fiber.

SUPERSTRUCTURE	—
FLYBRIDGE	—
RADAR ARCH	—
HARD TOP (opt)	—
PLATFORM/TRANSOM	—

— Carbon fiber

TECHNICAL FEATURES



Naturally, the Azimut Grande 25 Metri encompasses a number of features from the ECS (Enhanced Cruising Solutions) framework, such as Active Trim Control which automatically adjusts the longitudinal trim of the boat and improves fuel consumption efficiency at any speed. It also benefits from Electronic Power Steering, which not only enables the captain to personalise the sensitivity of the control functions to regulate wheel turns and steering effort based on speed and piloting preference, but also reduces maintenance and increases onboard safety.

The Raymarine integrated on-board monitoring system has been fully customised so as to seamlessly interface with key onboard plants and devices, from engine data to alarms and bilge pumps, from tank levels and discharge pumps to engine room ventilation and the sound and air conditioning systems. With its functions accessible from both helm stations and remotely via tablet, monitoring has never been easier or more comprehensive.

*Inimitable, in terms
of shape and line.*



MAIN TECHNICAL DATA

Length overall (incl. pulpit)	26.60 m (87' 3")
Beam max	6.20 m (20' 4")
Draft (incl. props at full load)	1.85 m (6' 1")
Displacement (at full load)	76.78 t (169270 lb)

PERFORMANCE

Engines	2 x MAN 1.650 mHP (opt. 2 x MAN 1800 mHP)
Maximum speed	up to 28 kn
Cruising speed	24 kn

ACCOMMODATION

Cabins	4 + 2 crew
Berths	8 + 2/3 crew
Head compartments	5 + 1 crew

TANK CAPACITY

Fuel capacity	7200 l (1902 US Gal)
Fresh water	1100 l (290 US Gal)

PROJECT

Building material	Carbon fiber and GRP
Exterior styling & concept	Stefano Righini
Interior designer	Achille Salvagni Architetti
Hull designer	Pierluigi Ausonio Naval Architecture & Azimut Yachts
Builder	Azimut Yachts
Certifications	CE Category A, NMMA

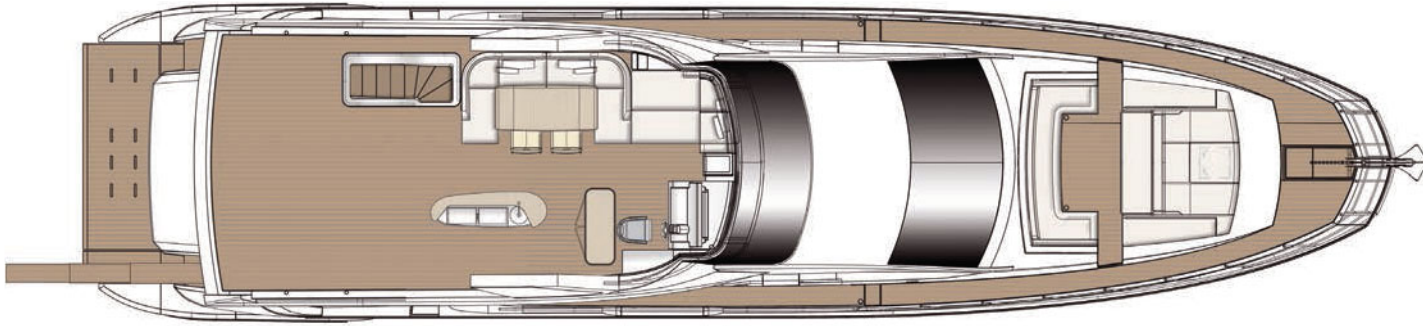
Regulations UNI ISO 8666

The levels of performance described apply to a standard craft (with standard equipment installed) with clean hull, propeller and rudders. Moreover, it is specified that such levels of performance were achieved under favourable sea and wind conditions (1 on the Beaufort scale and 1 on the Douglas scale); in the case of diverse or less favourable sea conditions performance levels may vary considerably.

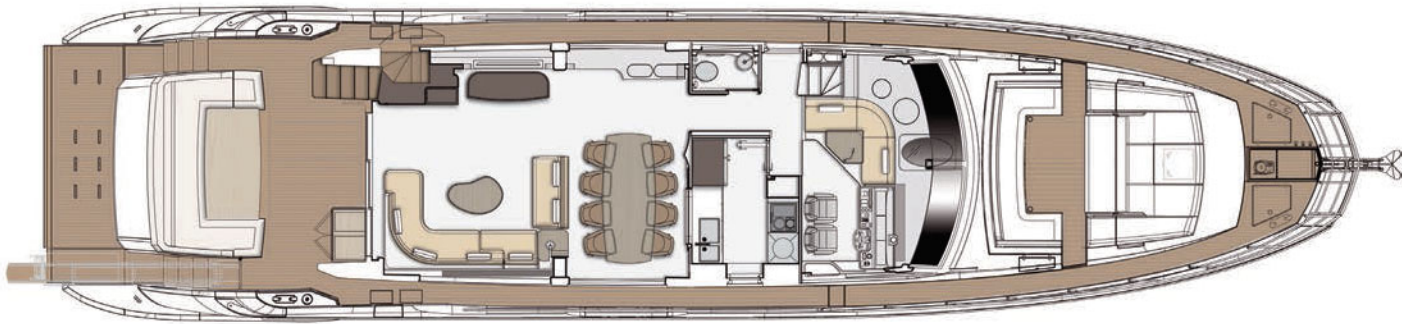
EC Approved

Owing to constant technological developments, Azimut-Benetti S.p.A. reserves the right to modify the technical specifications of its boats at any time and without prior notice.

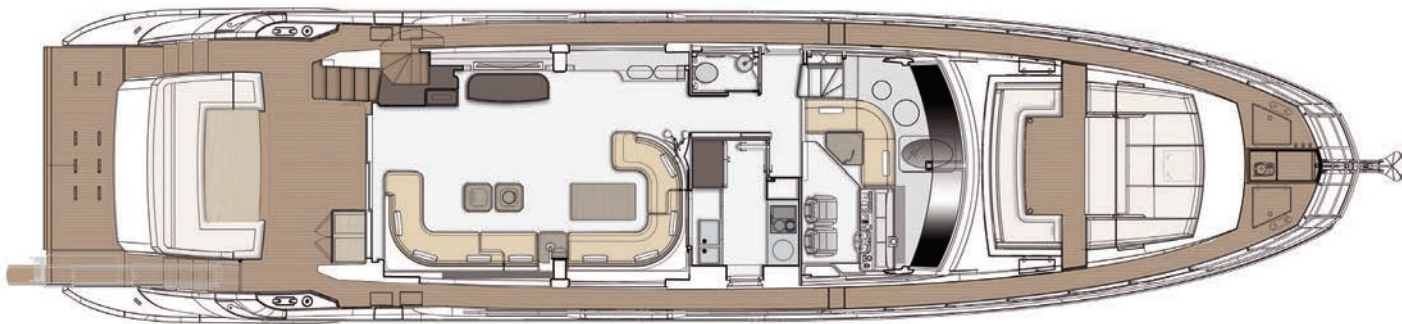
General arrangements



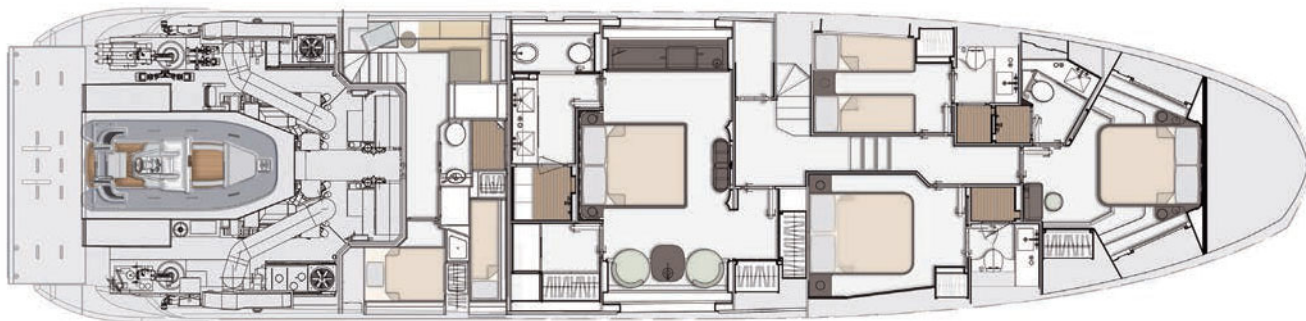
Flybridge



Main deck

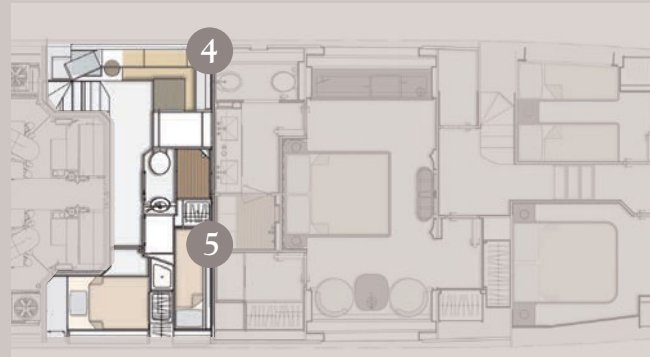
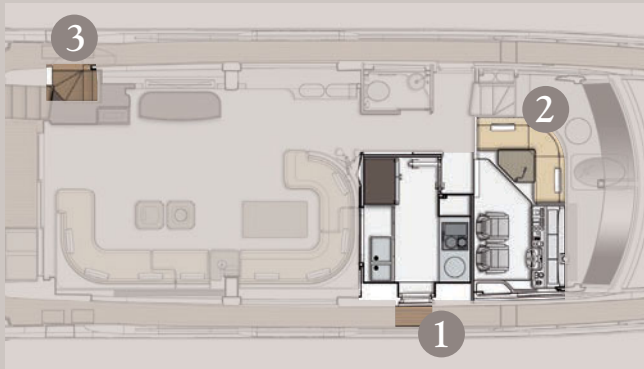


Main deck
Lounge version



Lower deck
Garage able to hold a 4-metre tender and two Seabobs

SUPERIOR LEVEL OF PRIVACY



Fully enclosed area options

- 1 Side door
- 2 Chart table/crew mess during the day
- 3 Side access to main crew quarter
- 4 Crew mess
- 5 Captain's cabin + crew cabin

A specially designed partition with sliding doors and the option to instantly switch between transparent and frosted glass allows the crew to move freely around the helm station and galley without encroaching in any way on the absolutely privacy of the owner and guests. Crew quarters, comprising mess, a cabin for the captain and a second cabin with bunk beds, are accessed from a stairway aft of the superstructure.





A pioneering privately-owned company

When you choose an Azimut Grande, you become a player in an all-Italian story, the story of a shipyard with a prestigious past, a rock solid company with an image of success which gives luxury yachts an added value that lasts over time. It is a large family business that builds boats and blends fanatical attention to detail and superb Italian creativity with constant technological development. With a vast distribution network spread over the five continents, Azimut Yachts is the symbol of the very best of "Made in Italy" throughout the world. The true leader in the manufacture of luxury yachts where unparalleled style merges seamlessly with innovation.

This brochure in no way constitutes a contract of sale for the boatyard's vessels to any person or company. All information contained herein, including but not limited to technical and performance data, illustrations, and drawings, is non-binding and for purposes of illustration only. The information in this brochure refers to the boatyard's standard motoryacht models available as of the date of publication. Technical and descriptive information is valid only to the extent that it pertains to the specific vessel that is the subject of a purchase. Contract terms are valid only to the extent that they are contained in a contract of sale. This document is based on information available at the time of publication. Despite efforts to ensure the greatest possible accuracy, the information contained herein may fail to cover all details, omit technical or commercial changes that may have been made subsequent to publication, describe features that are not present, and fail to envisage all circumstances that might occur. Any illustrations, photographs, diagrams and examples shown in this brochure are included solely for the purposes of illustrating the text. Due to the different features of each vessel, the boatyard assumes no liability for actual use based on the illustrated applications.

CONCEPT AND ART DIRECTION:

Matteo Fiorini Studio

GRAPHIC PROJECT:

Giacomo Vignoni Studio

PHOTOGRAPHS:

Paolo Petrignani

Sara Magni

Giovanni Malgarini

Guerrieri Visual

Printed in Italy by Tipo Stampa - August 2019

Azimut|Benetti SpA

VIA M. LUTHER KING, 9 - 10051 AVIGLIANA (TORINO - ITALIA)

Azimut Yachts - a brand of Azimut|Benetti Group

azimutyachts.com

AZIMUT YACHTS THANKS TO: Achille Salvagni Architetti, Aldus, Frette, Sartoria Mattei, Cattina, Caliban.

