

CLASSIC SUPREME 132'

CLASS RANGE



# 132'

## A NEW DIMENSION IN QUALITY OF LIFE

The new Classic Supreme 132' unites the design characteristics and comfort of a large displacement superyacht by Benetti with innovative design solutions.

The extensive full-height windows guarantee light-filled interiors and a seamlessly evocative view of the sea, while imprinting the exteriors designed by Stefano Righini with unprecedented dynamism. The two separate sunbathing and Jacuzzi areas - on the sun deck and in the bow - provide twice the livability. The bridge wings that retract into the gunwale, the open exterior stairways and integrated running lights give the yacht even more dynamic and streamlined styling. The retracting terrace in the Owner's suite, unique in a yacht of this length, provides yet another area for privacy and relaxation at the water's edge. Like all the other models in the Class Range, the interiors of Classic Supreme 132' can be fully customized. The Owner's desires are interpreted through the design sensibility and expertise of François Zuretti to transform the yacht into a unique craft.

Classic Supreme 132' also delivers technological excellence. The BEST platform - Benetti's Exclusive Sea Technology - integrates all electronic equipment and on board systems into the same user-friendly interface. The helm station integrated in the dashboard translates into a more minimalist design, with three monitors and three touch panels with joysticks offering total control for straightforward yacht management.

Welcome to a new dimension in quality of life on board.



CLASS RANGE

93'

108'

121'

Classic Supreme 132'

140'

145'





# LIMITLESS COMFORT AND SPACE



Sun Deck

A sea-going penthouse with a 100 sq mt sun deck, a day-head and four clearly separated areas to offer guests comfort and privacy even when outdoors. At the stern, the sunbathing area with Jacuzzi and the living area with full-custom interior decoration; in the bow, a spacious dining area, covered by a fiberglass hard top with electronically adjustable awning and built-in lighting, and a second living area for maximum enjoyment of the spectacular sea view.





# FORM AND FUNCTION





Upper Deck

The bow section of the upper deck is home to one of the major innovations in the exterior layout of Classic Supreme 132: the relaxation and sunbathing area. Complete with a Jacuzzi sunken into the deck and provided with adjustable sun umbrellas, it ensures that both Owner and guests enjoy a relaxing cruise caressed by the sea breeze. Like all the exterior decks, the upper deck is built from FSC-certified teak.

CLOSER TO  
THE SUN





The exclusive exterior layout of the upper deck is completed by loose furniture to offer even more flexibility. The outdoor dining table designed by the Benetti style office can seat up to 12 guests.

Upper Deck




# SUSPENDED OVER THE SEA



Classic Supreme 132' presents cutting edge design solutions and technological innovations. The exterior section of the upper deck features an open stairway built from steel with teak steps, designed to make the deck even more spacious, full of light and functional.

The extending balcony in the Owner's suite represents a remarkably novel and appealing feature. This private veranda can be extended and retracted as required to offer uniquely exclusive moments of relaxation and privacy.





*The interiors of Petrus II have been designed by François Zuretti in conjunction with the shipyard's team of architects. At the Owner's request, the furniture is adorned with exclusive hand-stitched leather inserts. The use of particular materials, including structured wengé that gives the wood a 3D effect, adds even more exclusive appeal to interiors that can be fully customized, as is always the case for Benetti Class Range yachts.*





Main Deck Saloon and Dining Area • Previous page: Main Deck Saloon



The main saloon, the place of choice for Owner and guests to meet and share the pleasure of life on board, is bathed in natural light that literally floods in through the big windows on both sides. The full-height windows on either side of the dining table, in particular, show off the contrasts between the wengé top and the wooden bases with satin-finish steel inserts. The recessed ceiling panels are ivory color natural leather.



The sky lounge has two full-height windows that offer not only a fine panoramic view, but also bathe the card table, bar corner and sofa with peninsula in light.

The BEST system makes it possible to use this multi-functional area as a full-blown media room to entertain the Owner and his or her guests.

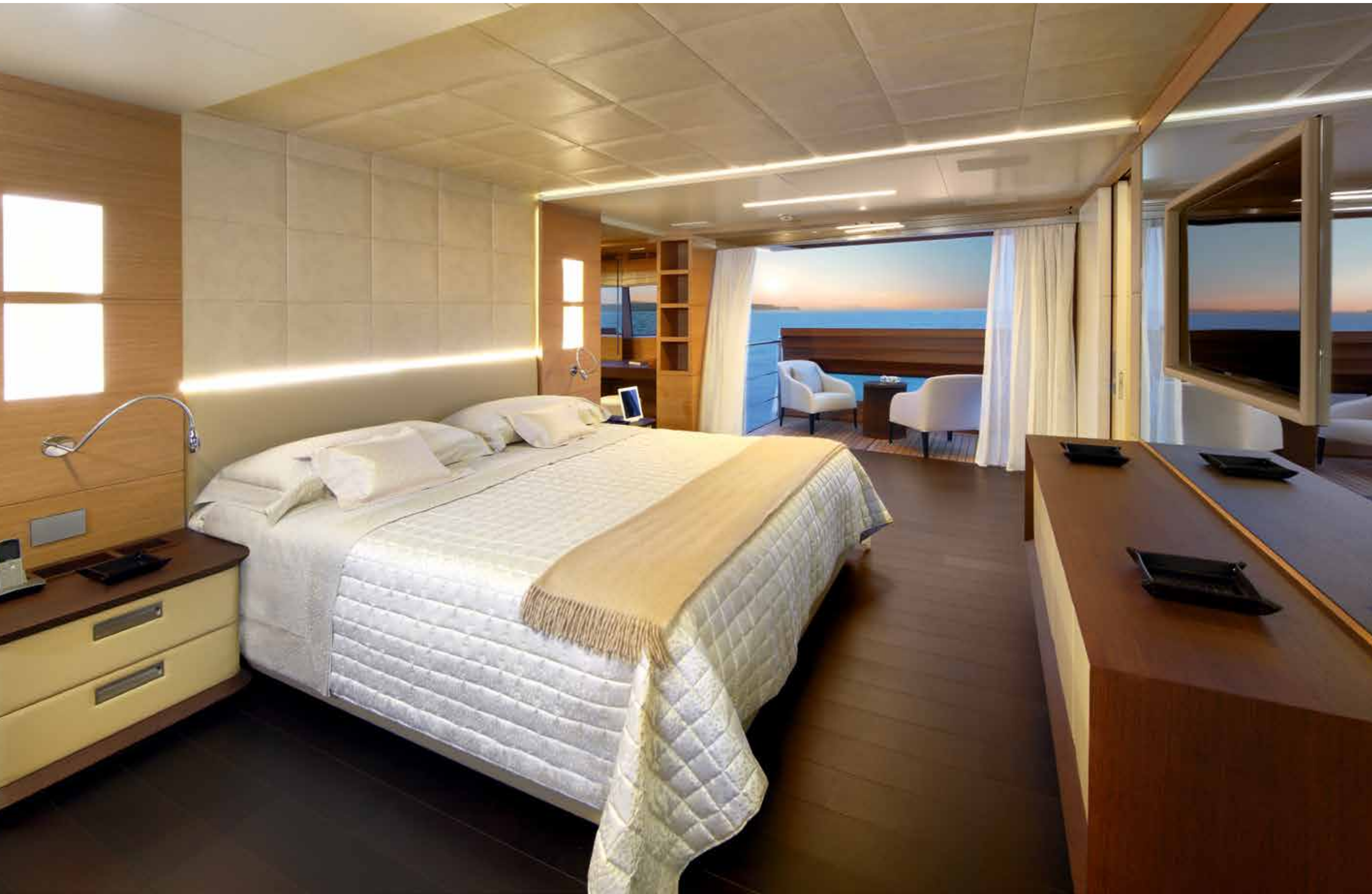
Upper Deck Sky Lounge



ITALIAN DESIGN IN EVERY

# DETAIL





Main Deck Owner's Cabin

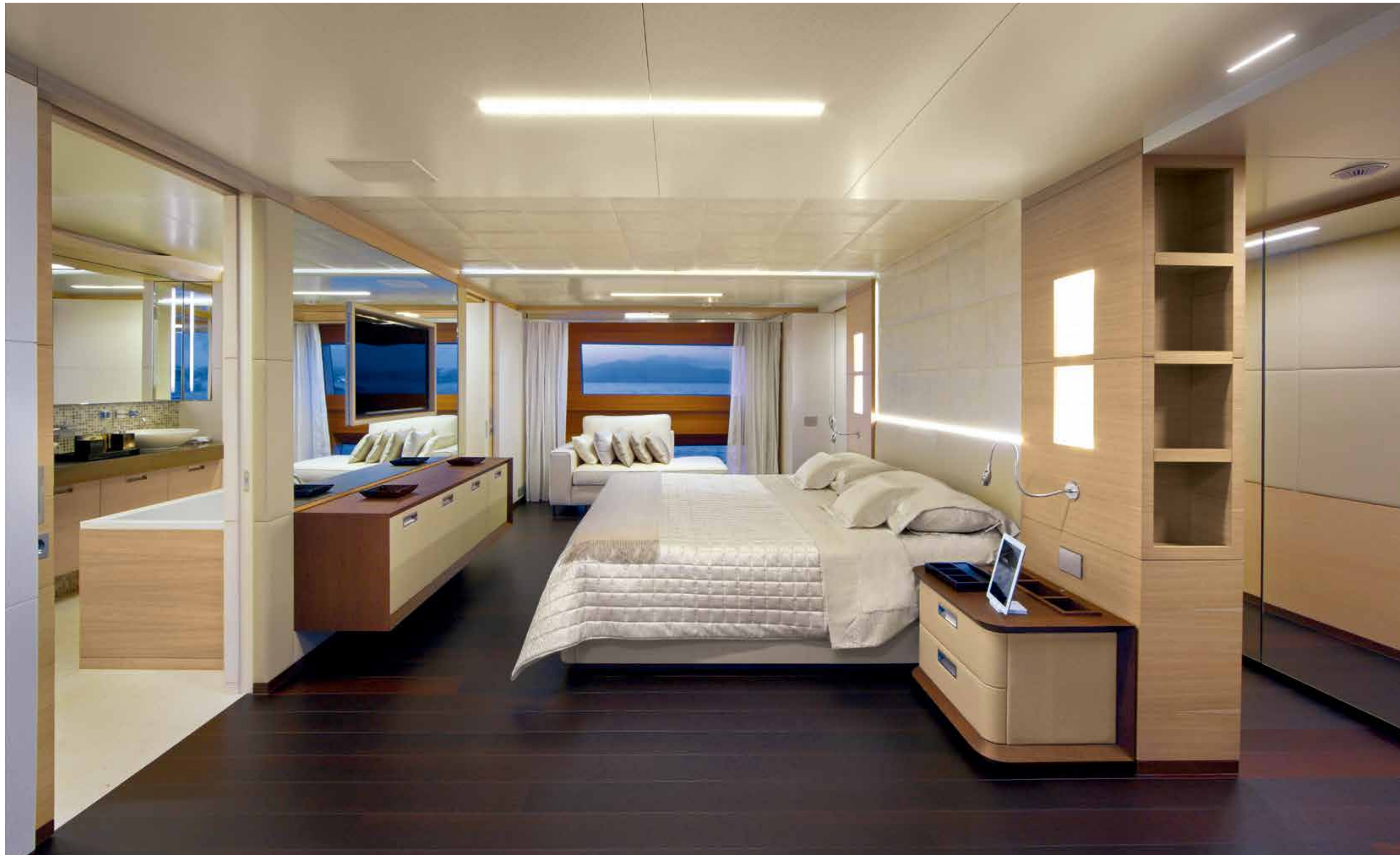
# ULTIMATE COMFORT AND PRIVACY

A remarkably novel and appealing feature in the Owner's suite is the platform that extends out over the sea, offering a private veranda area with a sliding, draw-action floor. The walk-in wardrobe, with two entrances, is located behind the bed. The bed head, as in the guests suites, is personalized with panels clad in ivory color leather. The wall opposite the balcony has a panoramic window and the mirrored partition at the foot of the bed is fitted with a big TV screen.





Main Deck Owner's Cabin







Main Deck Owner's Studio

The Master Cabin in Classic Supreme 132' is designed as a suite in the true sense of the word. 56 square meters for the Owner's exclusive use, including a study area, in an impeccable combination of function and comfort that expresses Benetti's signature style to perfection. The bathroom area also combines mosaic, leather and marble to create a perfect stylistic balance. The walls and floor are *Crema Champagne* marble and the sink top is *Amani Bronze* marble.



Main Deck Owner's Bathroom



Lower Deck Vip Cabin



Lower Deck Vip Bathroom

The guests suites and bathrooms also feature the utmost attention to unusual and innovative details. Interiors are lit with LED strips and silvery colored glass touch switches complete the fixtures in these areas.

# WELCOME TO EXCELLENCE



Lower Deck Guests Cabin



Wheelhouse

Like the other Benetti Class Range vessels, Classic Supreme 132' is fitted with innovative technology. The BEST platform - Benetti's Exclusive Sea Technology - integrates all electronic equipment and on board systems (from entertainment to automation and from communications to security) into the same userfriendly interface. The innovative, integrated helm station provides an interface with all navigation and communication instruments to ensure safe and reliable yacht operation. The dashboard has a modern, minimalist design, with three monitors, three touch panels and three mouse pads to manage and control the entire yacht using only a few advanced technology tools.



# CLASSIC SUPREME 132'

## TECHNICAL SPECIFICATIONS

UPDATED: JULY 2012 - VALID FROM HULL 004

### 00. GENERAL

The vessel dealt with in this specification is a motor yacht with a displacement hull, twin screw propellers and twin diesel engines.

**Model** Benetti Classic Supreme 132'

**Builder** Azimut-Benetti Spa, Benetti Shipyard  
Via M. Coppino, 104 Viareggio (Lucca) - Italy  
Phone +39 05843821 - sales@benettiyachts.it - benettiyachts.it

**Naval Architect** Azimut-Benetti, Benetti Technical Department

**Concept and Exterior Design** Stefano Righini

**Interior Design for Owner's and Guest areas** François Zuretti

**Interior Design for Crew areas** Azimut-Benetti, Benetti Technical Department

### Dimensions and Characteristics

**Length overall** 40.24 mt - 132'

**Waterline length at full load** 33.25 mt - 109' 1"

**Beam max** 8.18 mt - 26' 8"

**Draft at half load approx.** 2.1 mt - 6' 9"

**Draft at full load approx.** 2.23 mt - 7' 6"

**Light Ship Displacement** 220 tons

**Half Load Displacement** 250 tons

**Full Load Displacement** 275 tons

**Fuel tank capacity** 45,000 l - 11,887 US gals

**Fresh water capacity** 7,200 l - 1,902 US gals

**Grey water** 1,890 l - 499 US gals

**Black water** 2,200 l - 581 US gals

**Accommodation for Owner & Guests** 10 persons in 5 cabins

**Accommodation for Crew** 7 persons in 4 cabins

**Max speed at half load displacement** 15.5 Knots

**Cruising speed at 85% of maximum power at half load** 14.5 Knots

**Range at economic speed of 10 Knots** 3,500 Nautical Miles

### Classification and Certificates

The Yacht will be built in accordance with the following:

- RINA Rules for Classification of pleasure Yachts C \* HULL • MACH Y;
- As option the yacht can be built in accordance with LY2 Code for Large Yachts.

Flag Authority Requirements, additional to Class Notation and to the Specification, will be evaluated case by case and quoted accordingly.

# CLASSIC SUPREME 132'

## TECHNICAL SPECIFICATIONS

### 01. STRUCTURE

Hull and deck are entirely built in FRP (Fiberglass Reinforced Plastic) with combination of foam core sandwich and single skin fiberglass construction.

Superstructure is built in Fiberglass Reinforced Plastic with a cored sandwich structure.

The connection between the superstructure and the main deck will be obtained by means of stainless steel bolts and flanges and an adequate number of FRP layers according to the Classification Society requirements.

### 02. OUTFITTING

**Windlasses** 2 x 380 Vac / 3 phases vertical type

**Capstans** 2 x electric foot operated (380 Vac / 3 phases and power 2,000 W)

**Anchors** 2 x galvanised steel High Holding Power HHP of the weight of 225 kg each

**Chains** 2 x made of galvanised steel of 16 mm diameter with stud link

**Gangway** 1 x hydraulic retractable telescopic 3-stage

**Tender and water toys storage** Located on the aft garage n.1 Tender of 5,65 mt and n.1 jet-ski

### 03. AUXILIARY MACHINERY

Auxiliary machinery will be supplied and installed by the Builder in accordance to the General Arrangement and to the Technical Specification, as per Benetti standard.

### 04. PIPING

Piping will be supplied and installed by the Builder in accordance to the Technical Specification, as per Benetti standard.

### 05. VENTILATION AND AIR CONDITIONING

#### Air conditioning system

The air conditioning system is designed on the following data:

Summer conditions

**Outside air** 35 °C - 95 F - R.H. 90%

**Inside air** 22 °C - 72 F - R.H. 55%

**Sea water temperature** 32 °C - 90 F

Winter conditions

**Outside air** 0 °C - 32 F

**Inside air** 22 °C - 72 F

**Sea water temperature** 10 °C - 50 F

#### Ventilation system

##### Engine Room

A supply and extraction fans system will be installed for engine room ventilation. The fans will be of the axial flow type, flexibly mounted in the ventilation trunks or in the engine room.

##### Out Engine Room

In general technical compartments and storages will be naturally ventilated to ensure adequate ventilation of each space to avoid overheating and condensation.

The following compartments will have forced extraction:

- forward technical room and storage underneath (bosun locker)
- bilge below crew area
- garage
- main switchboard room
- chiller room
- battery boxes in engine room and in main deck technical lockers at mid sides
- engine room fire extinguishing system bottles box on aft stbd main deck.

### 06. ELECTRIC AND ELECTRONIC SYSTEM

The electrical equipment, wiring, fixtures, boards, switches etc. is designed, located, installed and tested according to the Classification Society rules, regulations and requirements.

The main power system consist of a 400 Vac, 3 phases + neutral at earth, 50 Hz. The Lighting system: 230 Vac, 1 phase + transformers 24 Vac, 50 Hz. Emergency lighting system, Radio system and services: 24V DC battery system.

#### Navigation and Communication system

The following equipment will be installed: INTEGRATED NAVIGATION SYSTEM "iBridge"

#### Visualizing system including:

- n° 3 LCD monitor (standard) 19" IP 65 marinized
- n° 2 LCD monitor (standard) 10" IP 65 marinized - for wings
- n° 1 control system
- n° 1 conversion system
- n° 1 switching system
- n° 1 cartography system
- n° 1 cartography software

#### Control system including:

- n° 1 tiller + jogger + trackball control set
- n° 3 touch panel control LCD 15", to monitor / control the following equipment:
  - Radars
  - Echosounder
  - Wipers
  - Horn
  - Steering pumps
  - Video switching of the monitoring system
  - Monitors dimming

- Search lights
- Steering mode
- Monitoring system
- Engine data

#### Navigation sensors including:

- n° 1 radar; 12 kW, 96 miles, 4 ft antenna IMO approved
- n° 1 graphic depth / log transducer
- n° 1 NMEA depth / log transducer
- n° 1 GPS IMO approved
- n° 1 gyro-compass system
- n° 1 overhead mounting magnetic compass

#### Charting Plotter system including:

- n° 1 processor black box
- n° 1 charting software (charts excluded)

#### Conning display system including:

- n° 1 PC marinized
- n° 1 software TI AD NMEA01 BASIC for simultaneous viewing of:
  - heading, rate of turn, Yacht speed, speed over ground, depth, water temperature, wind speed, wind direction, GPS, air temperature, air pressure
- engine modules on the naviconning system in wheelhouse
- conning system data on wings
- rudder angle indicator on the naviconning for wings and wheelhouse

#### Weather station including:

- Transducers interface
- Ultrasonic wind and pressure / temperature sensor on mast (integrated)
- Integrated GPS
- n° 1 display multi NMEA (for captain's cabin)

#### Autopilot and manoeuvring system including:

- n° 1 autopilot system, micro-processor controlled, with feedback system
- n° 1 LED rudder angle indicator
- n° 1 take-over system with PLC

#### Wing stations

Two control stations with 10" displays will be positioned externally at both sides of the wheelhouse and will include all the necessary commands and instruments for manoeuvring the Yacht in mooring operations, that is:

- steering tiller
- slave bow thruster control lever
- horn
- main engine throttles
- MME start / stop buttons and alarm signal, emergency stops

#### Entertainment system

##### Main saloon

- 1 x TV 52" LED full HD 1080P - 16:9
- 1 x Audio / video receiver, AM / FM Tuner – HDMI Input / Output
- 1 x "BEST" Audio video Client
- 1 x High quality speaker system surround 7.1 with powered subwoofer
- 1 x Integrated Wi-Fi remote control
- 1 x I-pod Docking station

##### Dining area

- 1 x Keyboard for volume control
- 1 x Pair of loudspeakers

##### External Main Deck

- 1 x Keyboard for volume control
- 2 x Pair of marinized speakers

# CLASSIC SUPREME 132'

## TECHNICAL SPECIFICATIONS

### Owner's Cabin

- 1 x TV 40" LED full HD 1080P - 16:9
- 1 x Audio / video receiver, AM / FM Tuner, HDMI Input / Output
- 1 x "BEST" Audio Video Client
- 1 x High quality speaker system surround 5.1 with powered subwoofer
- 1 x Integrated Wi-Fi remote control
- 1 x I-pod Docking station

### Guest's cabins

- 1 x TV 26" LCD HD ready - 16:9
- 1 x Audio video receiver – AM / FM Tuner – HDMI Input / Output
- 1 x "BEST" Audio video Client
- 1 x Pair of loudspeakers
- 1 x Integrated Wi-Fi remote control
- 1 x I-pod Docking station

### VIP's cabin

- 1 x TV 32" LCD HD ready - 16:9
- 1 x Audio Video receiver – AM / FM Tuner – HDMI Input / Output
- 1 x "BEST" Audio video Client
- 1 x Pair of loudspeakers
- 1 x Integrated Wi-Fi remote control
- 1 x I-pod Docking station

### Captain's cabin

- 1 x TV 22" LCD HD ready – 16:9
- 1 x Micro Hi-Fi – AM / FM Tuner - CD player
- 1 x Pair of loudspeakers
- 1 x Infrared receiver
- 1 x I-pod Docking station

### Engineer's cabin

- 1 x Micro Hi-Fi– AM / FM Tuner – CD player
- 1 x Pair of loudspeakers
- 1 x I-pod Docking station

### Crew cabins

- 1 x Micro Hi-Fi – AM / FM Tuner - CD player
- 1 x Pair of loudspeakers
- 1 x I-pod Docking station

### Crew mess

- 1 x TV 26" LCD HD ready - 16:9
- 1 x Micro Hi-Fi – AM / FM Tuner - DVD player
- 1 x Pair of loudspeakers
- 1 x I-pod Docking station

### Galley

- 1 x Micro Hi-Fi – AM / FM Tuner – DVD player
- 1 x Pair of loudspeakers
- 1 x I-pod Docking station

### Sky lounge

- 1 x TV 52" LED full HD 1080P - 16:9
- 1 x Audio Video receiver – AM / FM Tuner – HDMI Input / Output
- 1 x "BEST" Audio video Client
- 1 x High quality speaker system surround 5.1
- 1 x Integrated Wi-Fi remote control
- 1 x I-pod Docking Station

### Gym room

- 1 x Pair of loudspeakers
- 1 x BEST audio touch panel
- 1 x I-pod Docking Station

### External upper deck aft

- 1 x Key board for volume control
- 3 x Pairs of marinized speakers

### External upper deck fwd

- 1 x Marine CD / mp3 player – radio tuner
- 2 x Pair of marinized speakers

### Sun deck

- 1 x Marine CD / mp3 player – radio tuner
- 4 x Pairs of marinezed speakers

### Wheelhouse

- 1 x Micro Hi-Fi – sintoamplifier – CD player
- 1 x Pairs of marinized speakers

### TV SAT

- 1 x TV antenna system for terrestrial broadcasting reception
- 1 x Radio antenna system for terrestrial broadcasting reception
- "BEST" Integrated Entertainment System

## 07. MAIN MACHINERY

**Main engines** 2 x MTU 12V2000 M72 1080 kW @ 2250 rpm

**Gear box** 2 x ZF 335 I

**Generators** 2 x 80 kW 400 Vac / 3 phases / 50Hz

**Propellers** 2 x five fixed blades made in nickel - aluminium - bronze

**Water maker** 1 x reverse osmosis water makers (capacity 7,100 lt / day sea water temperature)

**Bow thruster** Hydraulic motor of 60 kW Naiad marine

**Stabilisers** Navigation Stab and Zero Speed at anchor Naiad Marine

## 08. INTERIORS

All decorative material, loose furniture, fittings, accessories, hardware etc. will be chosen according to the proper interior style and Benetti Excellence Range. Deviation from standard equipment will be quoted accordingly.

**Walls** Wall finish with panels of marine plywood, veneered or /and fabric upholster will be fitted in the owner's cabin, Owner's study, Owner's dressing, Main foyer, main saloon, dining area, guest's cabin, guest's lobby, main stairs, sky lounge, upper lobby, crew cabins, wheelhouse, powder rooms and bathrooms. Woods, veneered and solid, will be chosen in the Benetti Excellence Range

**Floors** Wool carpet is fitted in guest's cabin, guest's lobby, Owner's cabin, Owner's study, Owner's dressing, Main saloon, dining area, sky lounge, upper lobby, main stairs. Marble floor is fitted as per marble plan. Soft vinyl. Shower floor have drip-pan of fibreglass and anti slippery varnished wood grating. Carpet will be chosen in the Benetti Excellence Range

**Ceilings** Fabric and leather for ceiling covered is chosen in the Benetti Excellence range selection. Laminated panels or vinyl upholstered is fitted in stores, laundry and crew area. Lacquered panels is fitted in powder rooms, Owner's bathrooms, guest's bathrooms, crew's bathrooms and galley

**Door** Internal doors in the accommodation is made of double plywood sandwich panels

**Sanitary ware and taps** Wash basins, sink and bath as per General Arrangement and the Interior's Book

**Hardware** All Hardware in general will be chosen in the Benetti Excellence Range

**Loose furniture** According to the General Arrangement drawing. Loose furniture will be chosen in the Benetti Excellence Range

### Domestic appliances

Domestic equipment is supplied in accordance with the domestic equipment plan and the Benetti Excellence range.

### Main deck Galley / Pantry

- n° 1 cooking top 90 cm
- n° 1 exhaust hood
- n° 1 oven 90 cm
- n° 1 microwave
- n° 1 dishwasher
- n° 1 garbage macerator for the sink
- n° 2 freezer / fridge built
- n° 1 trash compactor
- n° 1 wine cellar undertop type

### Main deck bar

- n° 1 ice maker
- n° 1 minifridge

### Owner's study

- n° 1 minifridge

### Sky Lounge bar

- n° 1 ice maker
- n° 1 minifridge

### Sun deck area

- n° 1 barbecue
- n° 1 ice maker
- n° 1 minifridge

### Laundry

- n° 2 washer machine
- n° 2 dryer machine

### Guest lobby

- n° 1 minifridge

# CLASSIC SUPREME 132'

## GENERAL ARRANGEMENTS



Sun Deck



Main Deck



Upper Deck



Lower Deck

The lay-outs shown are some of the possible options and do not necessarily correspond to the standard version.



This Brochure shall not constitute in any circumstance whatsoever any offer by the Shipyard to any person or be incorporated into any contract. Any and all information contained in this Brochure, including without limitation all technical data, performance, illustrations and drawings, are just a rough guide and they are not contractual and refer to standard models of motor yachts built by the Shipyard and have been updated by the shipyards as of the date of issue of the Brochure. Therefore the only indications binding on the seller are contained solely in the sale agreement and in the relevant specific manual. This Brochure is based on information available at the date of issue. Notwithstanding all efforts to insure accuracy, the information contained in the Brochure may not cover all details, technical-commercial changes subsequent to the date of issue, nor accurately foresee or report all possible scenarios. Displays, photos, schemes, designs or examples contained in this brochure are solely and exclusively reproduced to highlight the information contained. Due to the different characteristics of each yacht, the Shipyard declines any and all liability for any use thereof on the basis of the information contained in this Brochure.